

Notes:

- Maximum Electrical Current:

AWG	2/0		
AMP	265		
- Maximum Electrical Rating: 75° 600 Volts Max.
- Terminal Material: Copper
- Wire Range: 2/0 AWG (70mm²)
- Terminal Surface Treatment: Tin Plated
- Terminal Thickness: 2.25mm
- Stud Size: 3/8 Stud

Standard (Metric)

0.91" (23mm)
 0.41" (10.5mm)
 0.47" (12mm)
 0.26" (6.5mm)
 1.73" (44mm)
 0.83" (21mm)
 0.47" (12mm)
 0.47" (12mm)
 0.17" (4.3mm)

Tolerances

(Unless Otherwise Specified)

0 > 6mm ± 0.20
 6 > 18mm ± 0.30
 18 > 30mm ± 0.40
 30 > 75mm ± 0.50

CATEGORY

Standard Compression Lugs

SCALE

1/1

PART #

TLKH70-10

SHEET

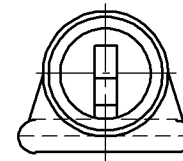
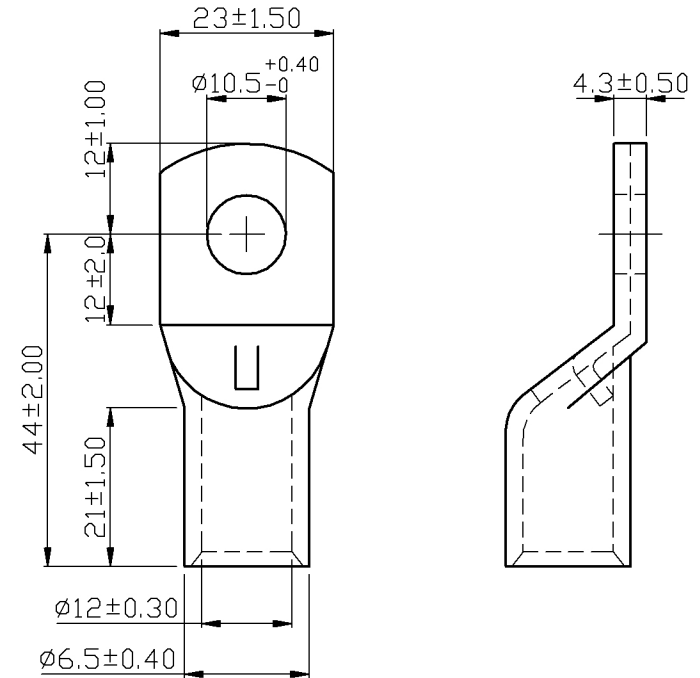
1-2

MATERIAL

Tin Plated Copper

PAGE

10F2



MIROMAR