

Notes:

- Maximum Electrical Current:

AWG	12	10	8
AMP	35	50	70
- Maximum Electrical Rating: 150° 600 Volts
- Terminal Material: Copper
- Wire Range: 8 AWG (10mm²)
- Terminal Surface Treatment: Tin Plated
- Terminal Thickness: 1.20mm

Standard (Metric)

1.10" (28mm)
 0.33" (8.5mm)
 0.33" (8.3mm)
 0.57" (14.5mm)
 0.24" (6.1mm)
 0.18" (4.5mm)
 0.28" (7.2mm)

Tolerances

(Unless Otherwise Specified)

CATEGORY

Non Insulated
Fork Terminals

SCALE

4/1

PART #

SNB8-8

SHEET

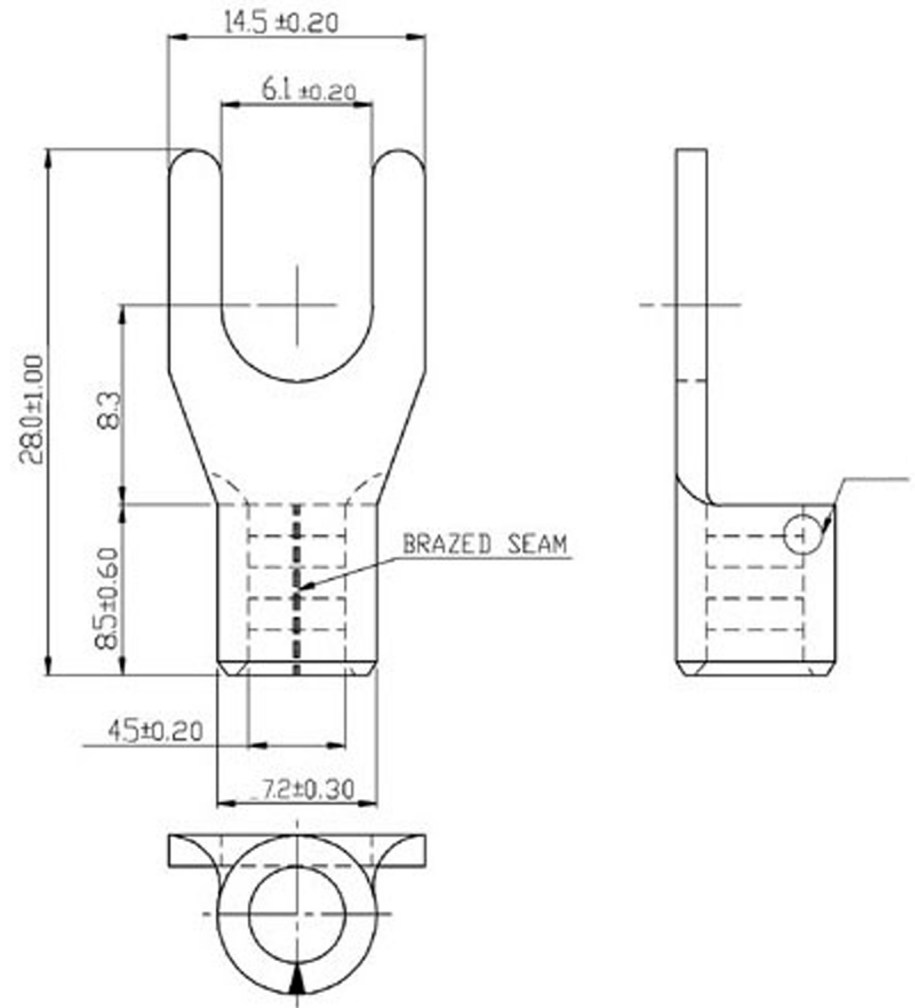
1-0

MATERIAL

Tin Plated Copper

PAGE

10F2



MIROMAR