

Notes:

- Maximum Electric Current:

AWG	12	10	
AMP	35	50	
- Maximum Electric Rating: 105°C 600 Volts Max
- Insulation Material: Vinyl
- Insulation Color: Yellow
- Terminal Material: Copper
- Wire Range: 12-10 AWG (4-6mm²)
- Terminal Surface Treatment: Tin Plated
- Terminal Thickness: 1.00mm

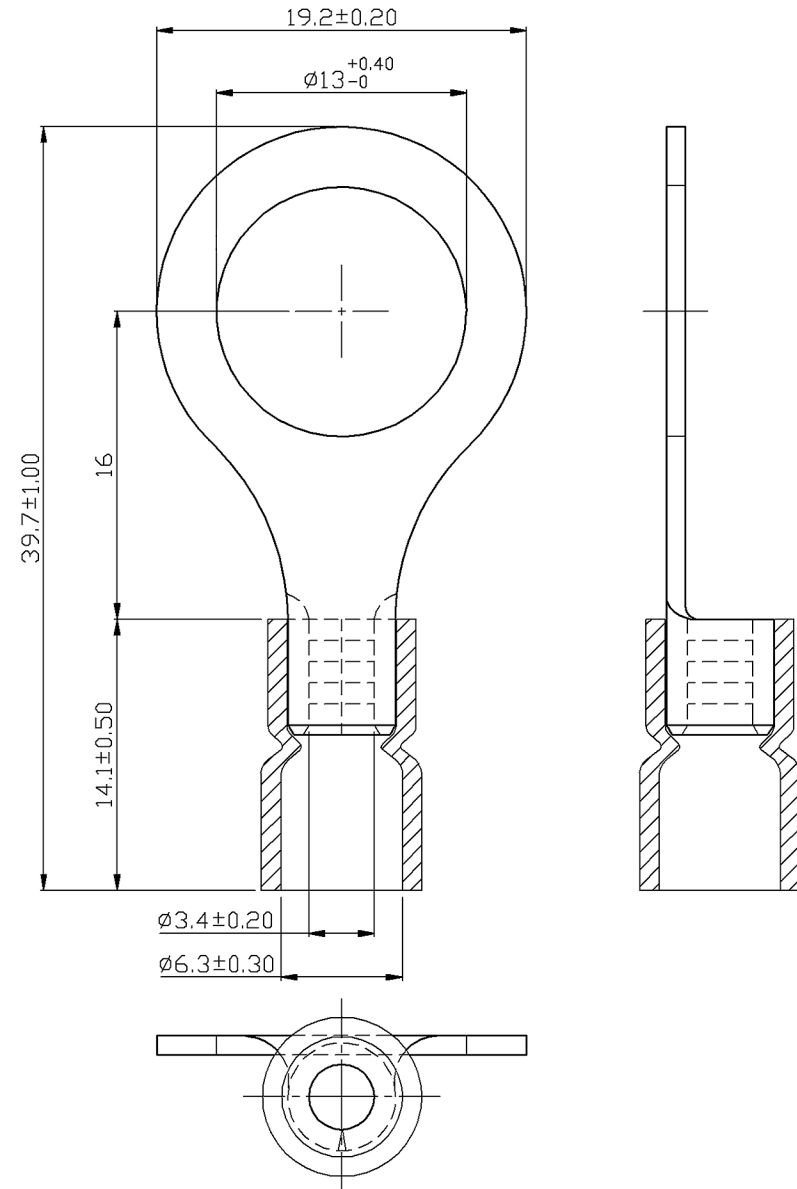
Standard (Metric)

1.56" (39.7mm)
 0.63" (16mm)
 0.56" (14.1mm)
 0.76" (19.2mm)
 0.51" (13mm)
 0.13" (3.4mm)
 0.25" (6.3mm)

Tolerances

(Unless Otherwise Specified)

CATEGORY	Easy Entry Insulated Ring Terminal - Butted Seam	SCALE	3/1
PART #	RVE5-12	SHEET	1-3
MATERIAL	Tin-Plated Copper	PAGE	10F2



MIROMAR