

Notes:

- Maximum Electric Current:

AWG	12	10	
AMP	35	50	
- Maximum Electric Rating: 105°C 600 Volts Max
- Insulation Material: Nylon
- Insulation Color: Yellow
- Terminal Material: Copper
- Wire Range: 12-10 AWG (4-6mm²)
- Terminal Surface Treatment: Tin Plated
- Terminal Thickness: 1.00mm

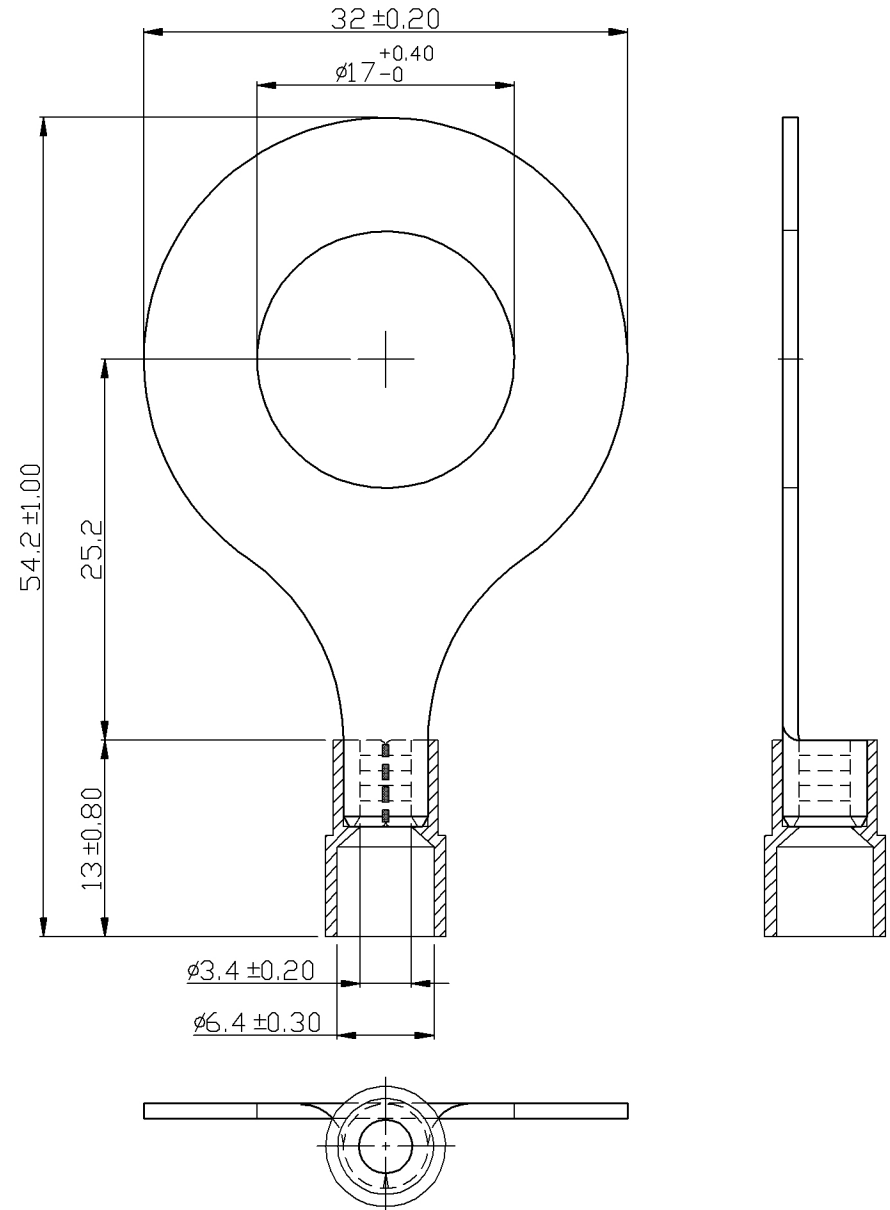
Standard (Metric)

- 2.13" (54.2mm)
- 0.99" (25.2mm)
- 0.51" (13mm)
- 1.26" (32mm)
- 0.67" (17mm)
- 0.13" (3.4mm)
- 0.25" (6.4mm)

Tolerances

(Unless Otherwise Specified)

CATEGORY	Nylon Ring Terminals - Standard Crimp	SCALE	2/1
PART #	RNY5-16	SHEET	1-3
MATERIAL	Tin-Plated Copper	PAGE	10F2



MIROMAR