

### Notes:

- Maximum Electric Current: 

AWG	16	14	
AMP	18	30	
- Maximum Electric Rating: 105°C 600 Volts Max
- Insulation Material: Nylon
- Insulation Color: Blue
- Terminal Material: Copper
- Wire Range: 16-14 AWG (1.5-2.5mm<sup>2</sup>)
- Terminal Surface Treatment: Tin Plated
- Terminal Thickness: 0.80mm

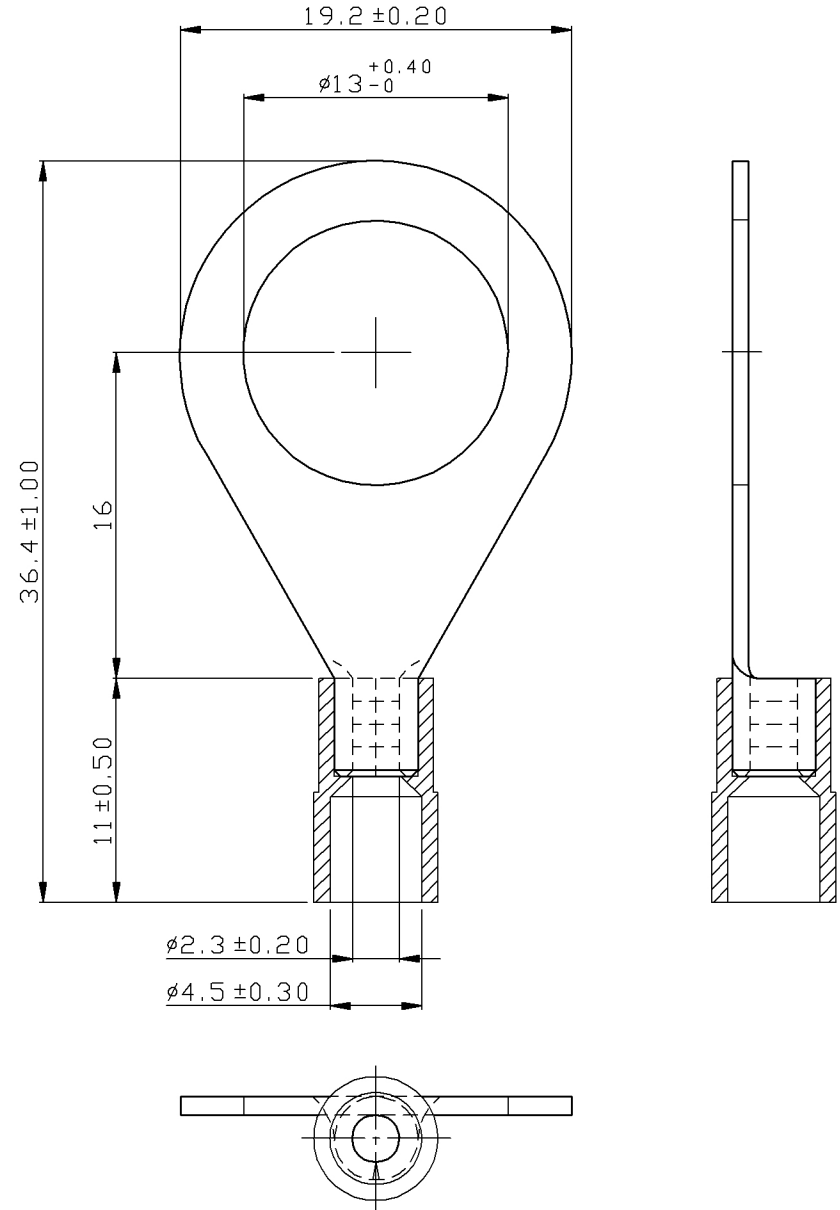
### Standard (Metric)

- 1.43" (36.4mm)
- 0.63" (16mm)
- 0.43" (11mm)
- 0.76" (19.2mm)
- 0.51" (13mm)
- 0.09" (2.3mm)
- 0.18" (4.5mm)

### Tolerances

(Unless Otherwise Specified)

<b>CATEGORY</b>	Nylon Ring Terminals - Standard Crimp	<b>SCALE</b>	3/1
<b>PART #</b>	RNY2-12	<b>SHEET</b>	1-2
<b>MATERIAL</b>	Tin-Plated Copper	<b>PAGE</b>	10F2



# MIROMAR