

Notes:

- Maximum Electrical Current:

| | | | | |
|-----|----|--|--|--|
| AWG | 8 | | | |
| AMP | 70 | | | |
- Maximum Electrical Rating: 150° 600 Volts
- Terminal Material: Copper
- Wire Range: 8 AWG (8mm²)
- Terminal Surface Treatment: Tin Plated
- 1/4 Stud Size
- Terminal Thickness: 1.20mm

Standard (Metric)

0.94" (23.8mm)
 0.33" (8.5mm)
 0.37" (9.3mm)
 0.47" (12mm)
 0.25" (6.4mm)
 0.18" (4.5mm)
 0.28" (7.2mm)

Tolerances

(Unless Otherwise Specified)

CATEGORY

Non Insulated
Ring Terminals

SCALE

4/1

PART #

RNBS8-6

SHEET

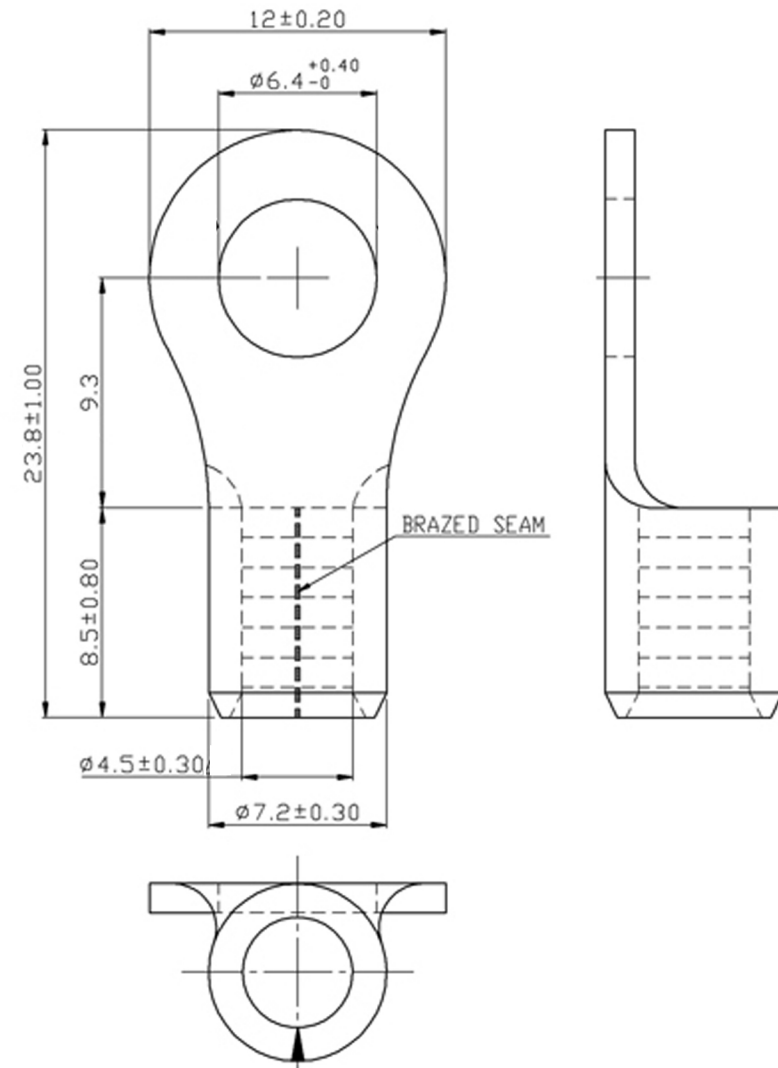
1-4

MATERIAL

Tin Plated Copper

PAGE

10F2



MIROMAR