

Notes:

- Maximum Electrical Current:

AWG	2		
AMP	170		
- Maximum Electrical Rating: 150° 600 Volts
- Terminal Material: Copper
- Wire Range: 2 AWG (38mm²)
- Terminal Surface Treatment: Tin Plated
- 5/16 Stud Size
- Terminal Thickness: 1.80mm

Standard (Metric)

1.53" (38.8mm)
 0.55" (14mm)
 0.69" (17.4mm)
 0.60" (15.3mm)
 0.33" (8.4mm)
 0.37" (9.4mm)
 0.52" (13.3mm)

Tolerances

(Unless Otherwise Specified)

CATEGORY

Non Insulated
Ring Terminals

SCALE

2/1

PART #

RNBS38-8

SHEET

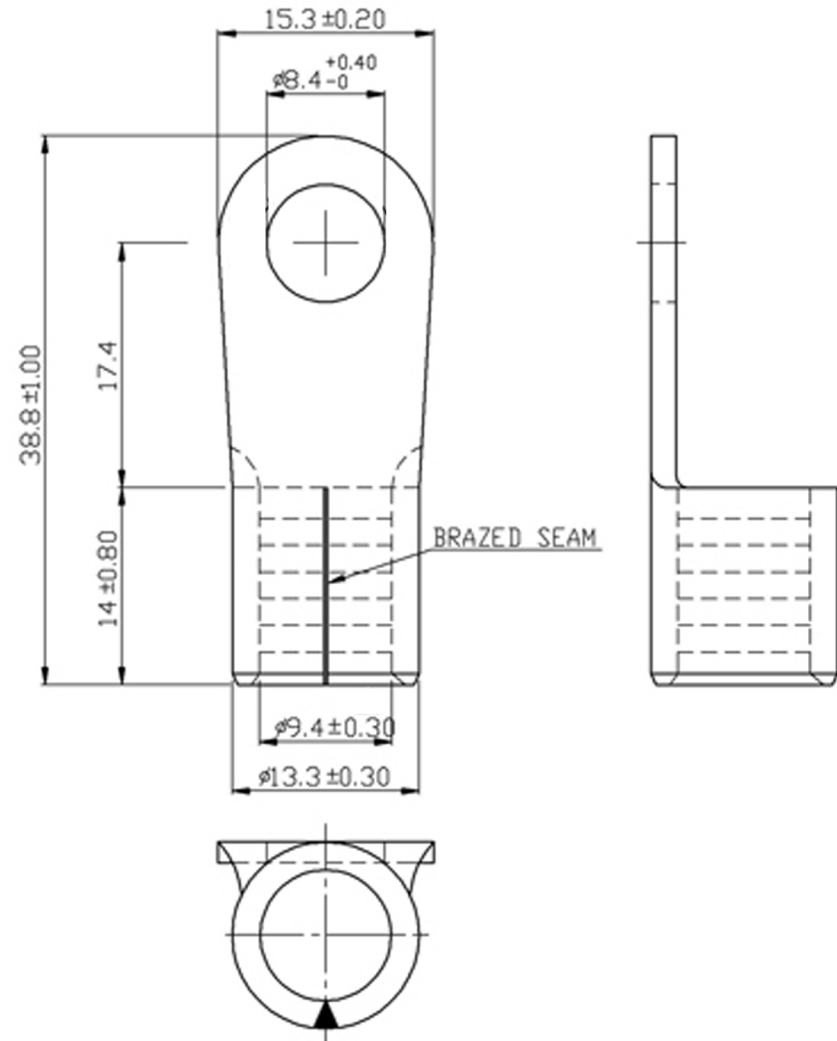
1-3

MATERIAL

Tin Plated Copper

PAGE

10F2



MIROMAR