

Notes:

- Maximum Electrical Current:

AWG	2/0		
AMP	265		
- Maximum Electrical Rating: 150° 600 Volts
- Terminal Material: Copper
- Wire Range: 2/0 AWG (70mm²)
- Terminal Surface Treatment: Tin Plated
- 3/8 Stud Size
- Terminal Thickness: 2.00mm

Standard (Metric)

1.97" (50mm)
 0.69" (17.6mm)
 0.79" (20mm)
 0.94" (24mm)
 0.41" (10.5mm)
 0.52" (13.1mm)
 0.69" (17.5mm)

Tolerances

(Unless Otherwise Specified)

CATEGORY

Non Insulated
Ring Terminal

SCALE

1.5/1

PART #

RNB70-10

SHEET

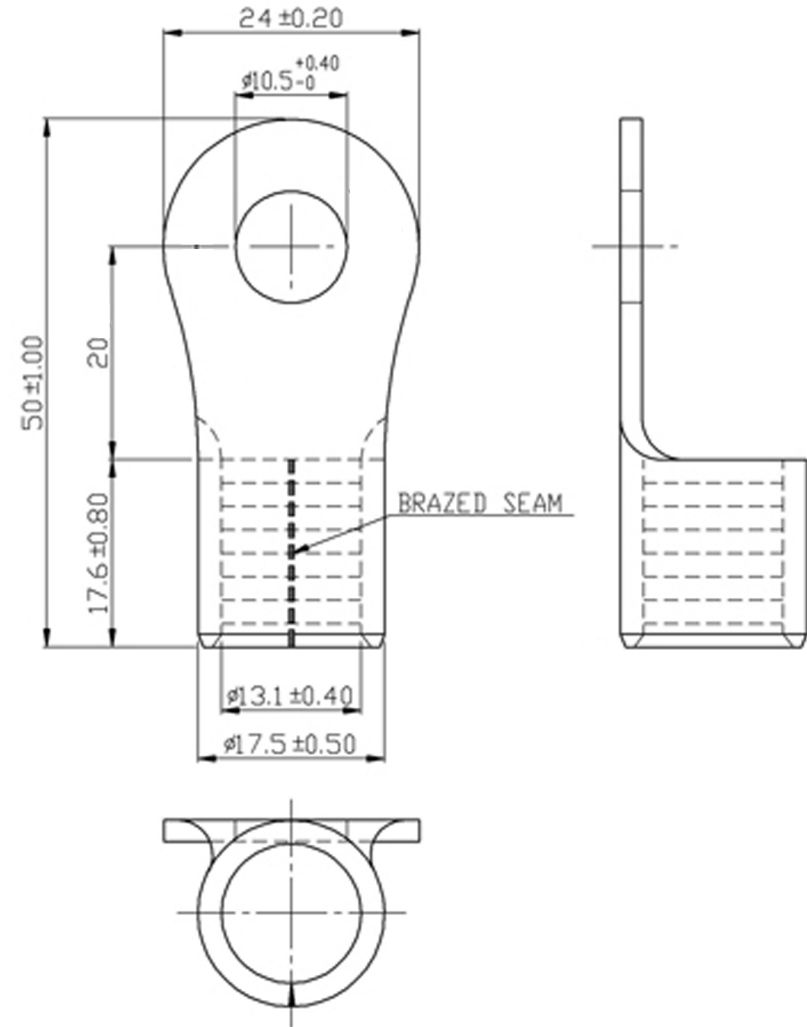
1-3

MATERIAL

Tin Plated Copper

PAGE

10F2



MIROMAR