

## Notes:

- Maximum Electrical Current: 

AWG	12	10	
AMP	35	50	
- Maximum Electrical Rating: 150° 600 Volts
- Terminal Material: Copper
- Wire Range: 12-10 AWG (4-6mm<sup>2</sup>)
- Terminal Surface Treatment: Tin Plated
- 1/4 Stud Size
- Terminal Thickness: 1.00mm

### Standard (Metric)

0.89" (22.5mm)  
 0.24" (6mm)  
 0.41" (10.5mm)  
 0.47" (12mm)  
 0.25" (6.4mm)  
 0.13" (3.4mm)  
 0.22" (5.6mm)

### Tolerances

(Unless Otherwise Specified)

**CATEGORY**

Non Insulated  
Ring Terminal

**SCALE**

4/1

**PART #**

RNB5-6

**SHEET**

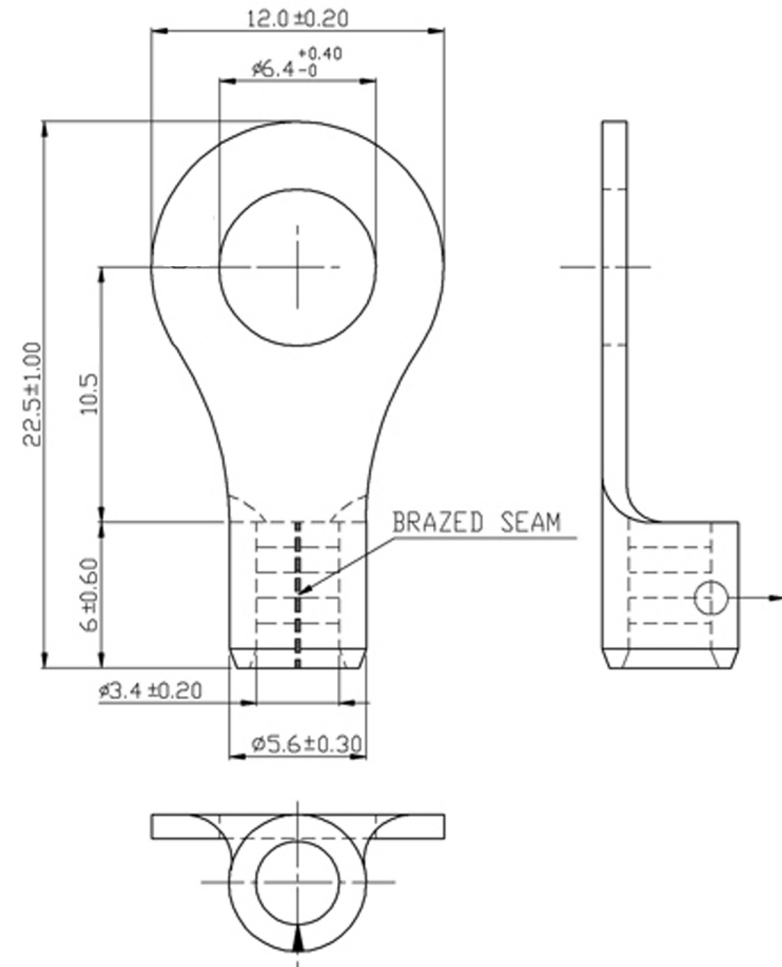
1-3

**MATERIAL**

Tin Plated Copper

**PAGE**

10F2



**MIROMAR**