

Notes:

- Maximum Electrical Current:

AWG	4		
AMP	125		
- Maximum Electrical Rating: 150° 600 Volts
- Terminal Material: Copper
- Wire Range: 4 AWG (22mm²)
- Terminal Surface Treatment: Tin Plated
- 5/16 Stud Size
- Terminal Thickness: 1.70mm

Standard (Metric)

1.33" (33.7mm)
 0.46" (11.8mm)
 0.53" (13.5mm)
 0.65" (16.5mm)
 0.33" (8.4mm)
 0.30" (7.7mm)
 0.45" (11.5mm)

Tolerances

(Unless Otherwise Specified)

CATEGORY

Non Insulated
Ring Terminal

SCALE

2/1

PART #

RNB22-8

SHEET

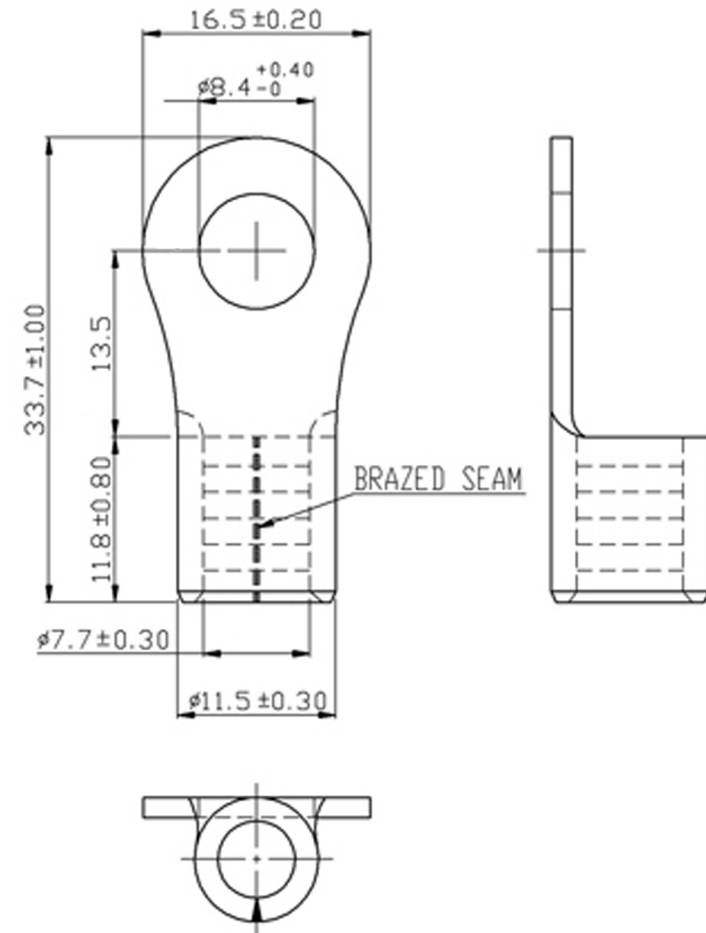
1-3

MATERIAL

Tin Plated Copper

PAGE

10F2



MIROMAR