

Notes:

- Maximum Electrical Current:

AWG	22	20	18	16
AMP	9	12	17	18
- Terminal Material: Brass
- Wire Range: 22-16 AWG (0.50-1.5mm²)
- Thickness: 0.40mm
- No Plating
- Suitable Screw: M3

Standard (Metric)

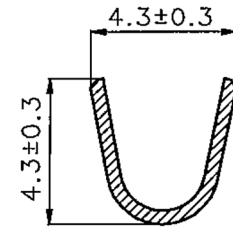
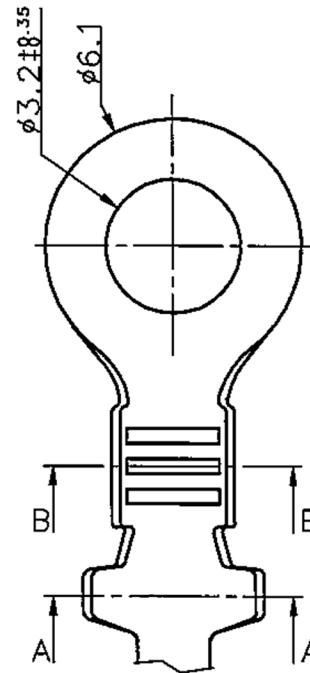
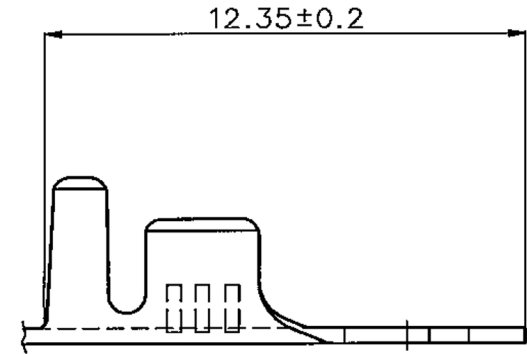
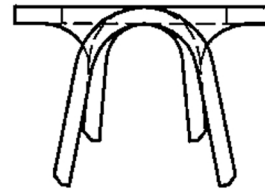
0.49" (12.35mm)
 0.13" (3.2mm)
 0.24" (6.1mm)
 0.17" (4.3mm)
 0.17" (4.3mm)
 0.13" (3.2mm)
 0.11" (2.9mm)

Tolerances

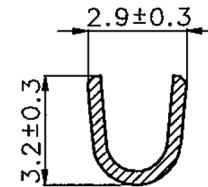
(Unless Otherwise Specified)

0 > 6mm ± 0.20
 6 > 18mm ± 0.30
 18 > 30mm ± 0.40
 30 > 75mm ± 0.50

CATEGORY	Ring Type Series Terminal	SCALE	5/1
PART #	RM030-01B9L	SHEET	1-3
MATERIAL	Brass	PAGE	10F1



A-A



B-B