

## Notes:

- Maximum Electric Current: 

AWG	12	10		
AMP	35	50		
- Maximum Electric Rating: 105°C 600 Volts Max
- Insulation Material: Nylon
- Insulation Color: Yellow
- Terminal Material: Copper
- Wire Range: 12-10 AWG (4-6mm<sup>2</sup>)
- Terminal Surface Treatment: Tin Plated
- Terminal Thickness: 1.00mm
- Double Crimp

### Standard (Metric)

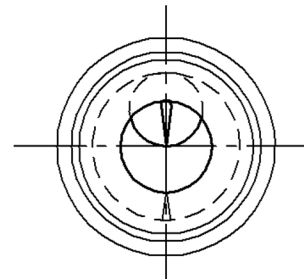
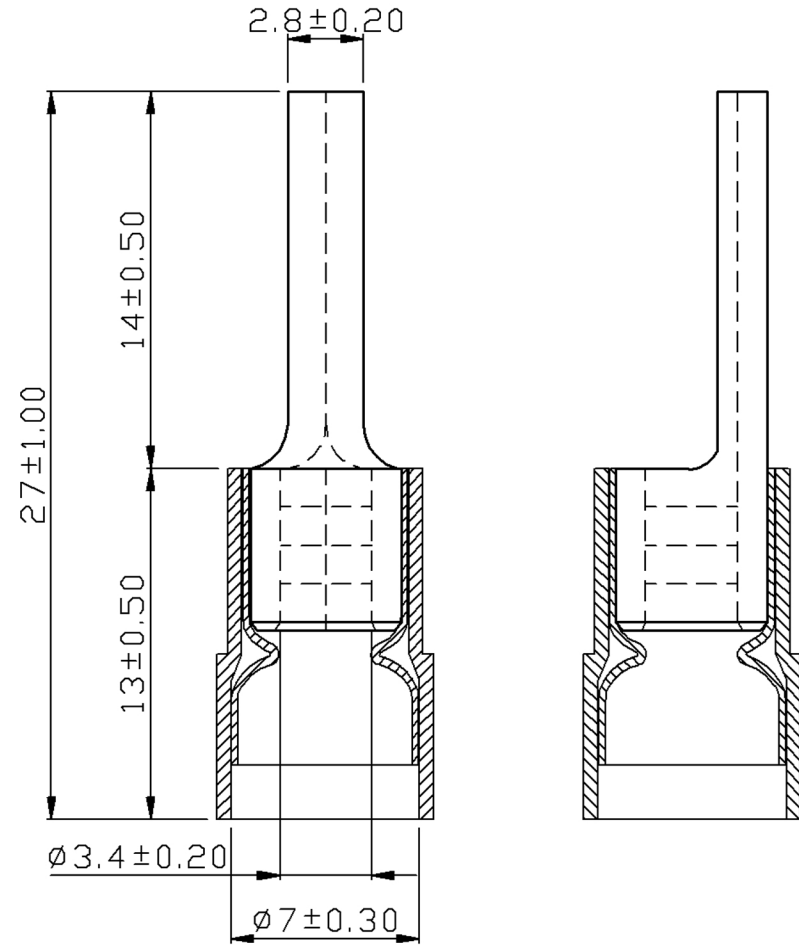
1.06" (27mm)  
 0.51" (13mm)  
 0.55" (14mm)  
 0.11" (2.8mm)  
 0.13" (3.4mm)  
 0.28" (7mm)

### Tolerances

(Unless Otherwise Specified)

0 > 6mm ± 0.20  
 6 > 18mm ± 0.30  
 18 > 30mm ± 0.40  
 30 > 75mm ± 0.50

<b>CATEGORY</b>	Nylon Insulated Double Crimp Pin Terminals	<b>SCALE</b>	3/1
<b>PART #</b>	PTNYD5-13	<b>SHEET</b>	1-3
<b>MATERIAL</b>	Tin-Plated Copper	<b>PAGE</b>	10F2



# MIROMAR