

Notes:

- Maximum Electric Current:

AWG	22	20	18	16
AMP	9	12	17	18
- Maximum Electric Rating: 105°C 600 Volts Max
- Insulation Material: Nylon
- Insulation Color: Red
- Terminal Material: Copper
- Wire Range: 22-16 AWG (0.5-1.5mm²)
- Terminal Surface Treatment: Tin Plated
- Terminal Thickness: 0.75mm
- Double Crimp

Standard (Metric)

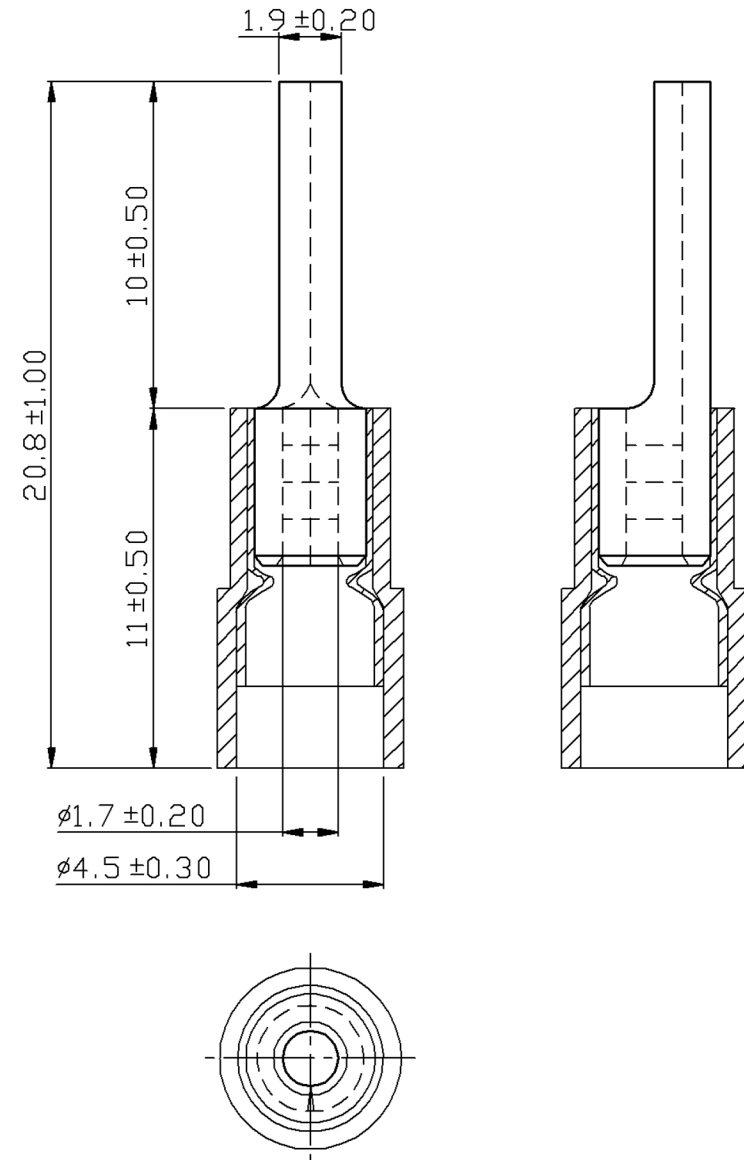
0.82" (20.8mm)
 0.43" (11mm)
 0.39" (10mm)
 0.07" (1.9mm)
 0.07" (1.7mm)
 0.18" (4.5mm)

Tolerances

(Unless Otherwise Specified)

0 > 6mm ± 0.20
 6 > 18mm ± 0.30
 18 > 30mm ± 0.40
 30 > 75mm ± 0.50

CATEGORY	Nylon Insulated Double Crimp Pin Terminals	SCALE	4/1
PART #	PTNYD1-10	SHEET	1-3
MATERIAL	Tin-Plated Copper	PAGE	10F1



MIROMAR