

Notes:

- Maximum Electric Current:

| | | | |
|-----|----|----|--|
| AWG | 12 | 10 | |
| AMP | 35 | 50 | |
- Maximum Electric Rating: 105°C 600 Volts Max
- Insulation Material: Nylon
- Insulation Color: Yellow
- Terminal Material: Copper
- Wire Range: 12-10 AWG (4-6mm²)
- Terminal Surface Treatment: Tin Plated
- Terminal Thickness: 1.00mm

Standard (Metric)

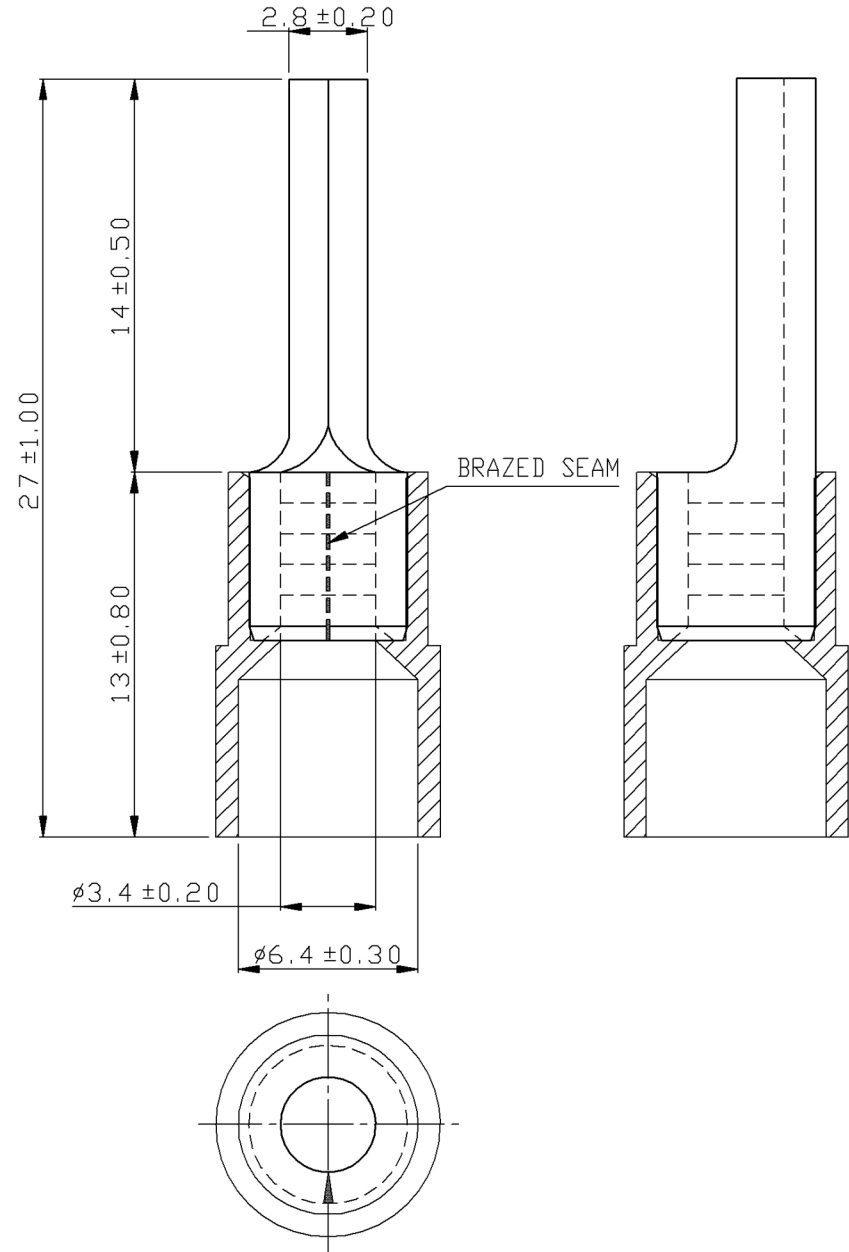
1.06" (27mm)
 0.51" (13mm)
 0.55" (14mm)
 0.11" (2.8mm)
 0.13" (3.4mm)
 0.25" (6.4mm)

Tolerances

(Unless Otherwise Specified)

0 > 6mm ± 0.20
 6 > 18mm ± 0.30
 18 > 30mm ± 0.40
 30 > 75mm ± 0.50

| | | | |
|-----------------|-------------------------------|--------------|------|
| CATEGORY | Nylon Insulated Pin Terminals | SCALE | 4/1 |
| PART # | PTNYB5-13 | SHEET | 1-4 |
| MATERIAL | Tin-Plated Copper | PAGE | 10F1 |



MIROMAR