

**Notes:**

- Maximum Electric Current: 

AWG	12	10	
AMP	35	50	
- Maximum Electric Rating: 75°C 2000 Volts Max
- Terminal Material: Copper
- Wire Range: 12-10 AWG (2.5-6mm<sup>2</sup>)
- Terminal Surface Treatment: Tin Plated
- Terminal Thickness: 1.00mm

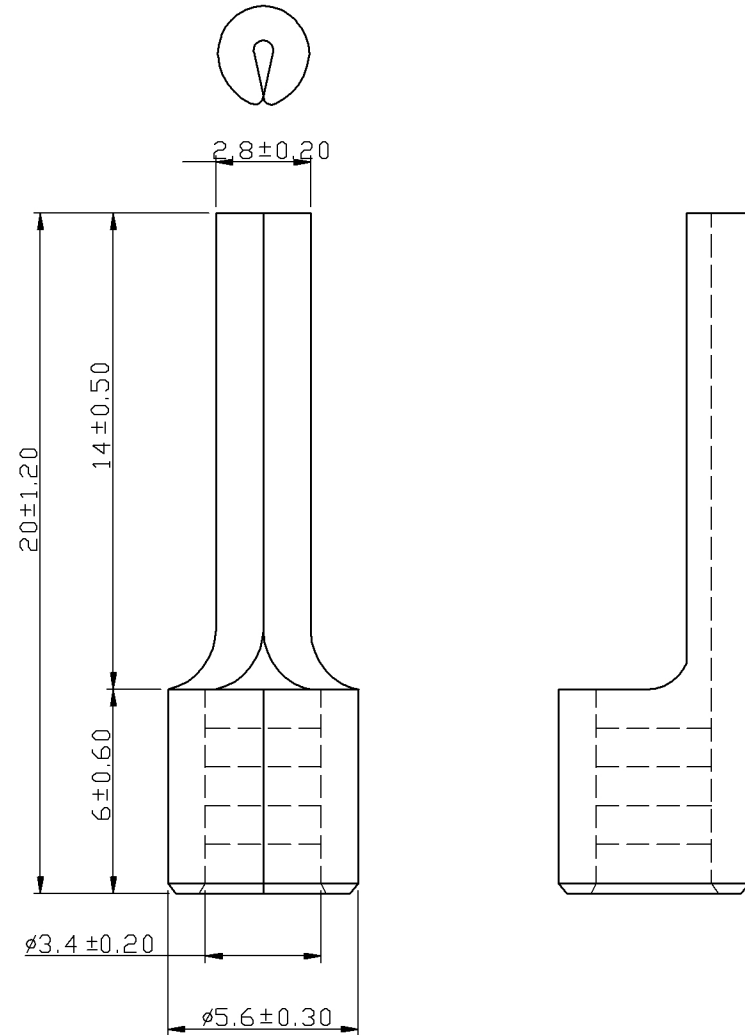
**Standard (Metric)**

- 0.79" (20mm)
- 0.55" (14mm)
- 0.24" (6mm)
- 0.11" (2.8mm)
- 0.13" (3.4mm)
- 0.22" (5.6mm)

**Tolerances**

(Unless Otherwise Specified)

<b>CATEGORY</b>	Non Insulated Pin Terminals	<b>SCALE</b>	5/1
<b>PART #</b>	PTN5-13	<b>SHEET</b>	1-3
<b>MATERIAL</b>	Tin-Plated Copper	<b>PAGE</b>	10F1



**MIROMAR**