

### Notes:

- Maximum Electric Current:
 

AWG	12	10	
AMP	35	50	
- Maximum Electric Rating: 105°C 600 Volts Max
- Insulation Material: Vinyl
- Insulation Color: Yellow
- Terminal Material: Copper
- Wire Range: 12-10 AWG (4-6mm<sup>2</sup>)
- Terminal Surface Treatment: Tin Plated
- Terminal Thickness: 1.00mm
- Double Crimp

### Standard (Metric)

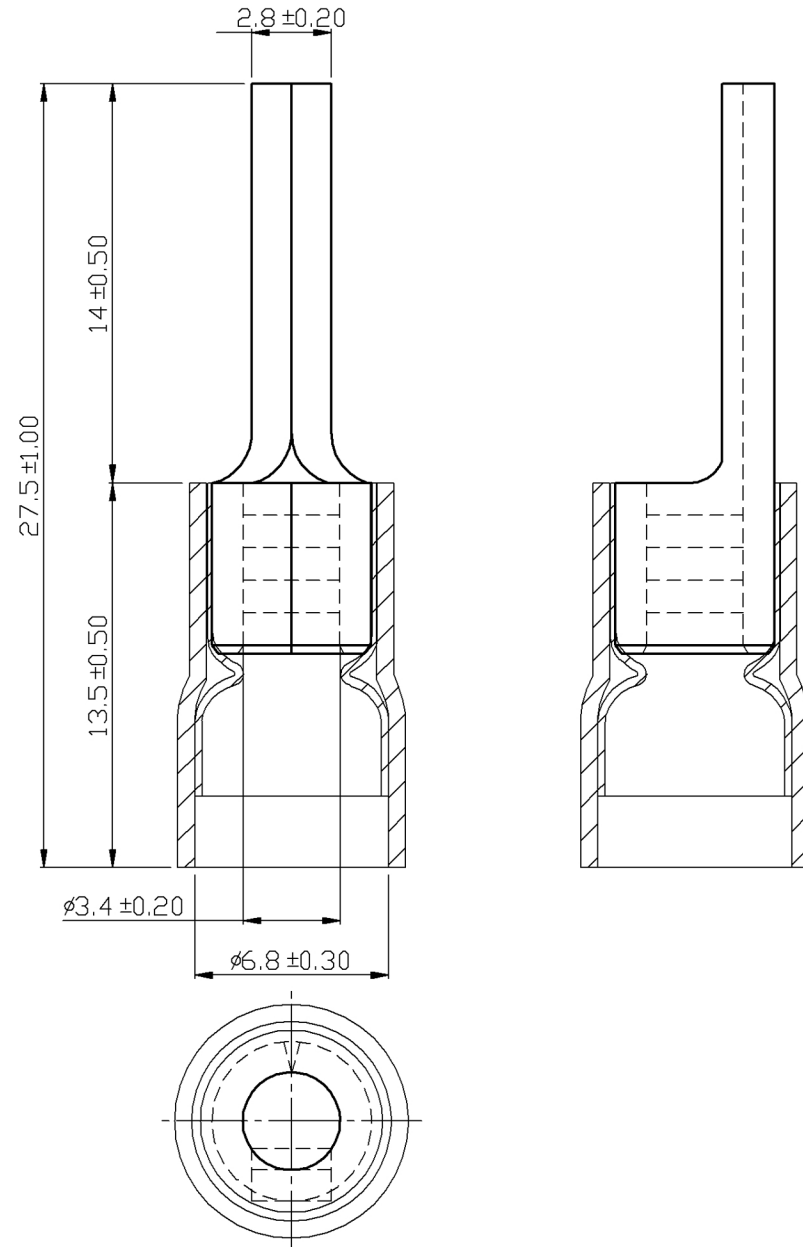
- 1.08" (27.5mm)
- 0.53" (13.5mm)
- 0.55" (14mm)
- 0.11" (2.8mm)
- 0.13" (3.4mm)
- 0.27" (6.8mm)

### Tolerances

(Unless Otherwise Specified)

- 0 > 6mm ± 0.20
- 6 > 18mm ± 0.30
- 18 > 30mm ± 0.40
- 30 > 75mm ± 0.50

<b>CATEGORY</b>	Vinyl Insulated Double Crimp Pin Terminals	<b>SCALE</b>	4/1
<b>PART #</b>	PTD5-13	<b>SHEET</b>	1-5
<b>MATERIAL</b>	Tin-Plated Copper	<b>PAGE</b>	10F1



# MIROMAR