

Notes:

1. Maximum Electric Current:

AWG	16	14	
AMP	10	15	
2. Maximum Electric Rating: 75°C 300 Volts Max
3. Insulation Material: Vinyl
4. Insulation Color: Blue
5. Terminal Material: Brass
6. Wire Range: 16-14 AWG (1.5-2.5mm²)
7. Terminal Surface Treatment: Tin Plated
8. Terminal Thickness: 0.80mm
9. Nema Tab: 0.032" x 0.187" (0.8mm x 4.75mm)

Standard (Metric)

- 0.79" (20mm)
- 0.40" (10.2mm)
- 0.26" (6.7mm)
- 0.19" (4.75mm)
- 0.09" (2.3mm)
- 0.17" (4.3mm)

Tolerances

(Unless Otherwise Specified)

CATEGORY

Vinyl Insulated
Male Quick Disconnects

SCALE

4/1

PART #

MDV2-187(8)

SHEET

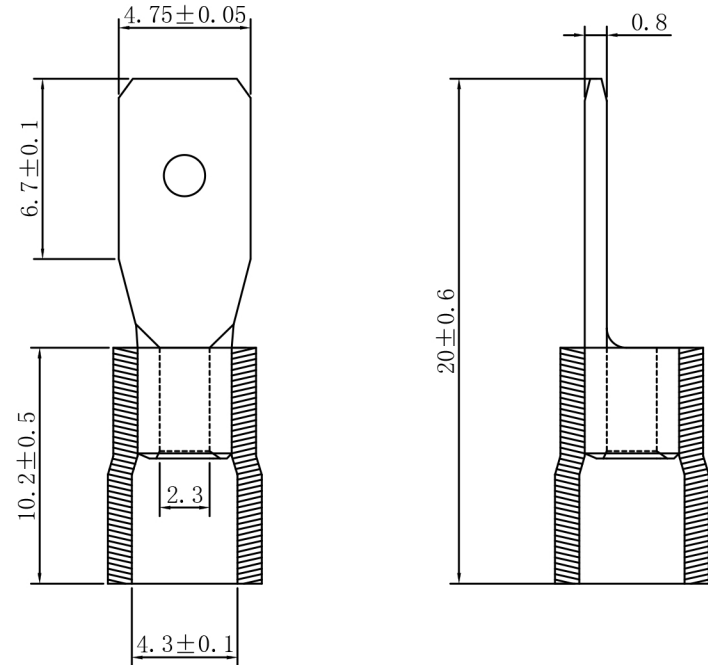
1-0

MATERIAL

Tin-Plated Brass

PAGE

10F1



MIROMAR