

## Notes:

- Maximum Electric Current:
 

AWG	22	20	18	16
AMP	3	4	7	10
- Maximum Electric Rating: 105°C 600 Volts Max
- Insulation Material: Nylon
- Insulation Color: Red
- Terminal Material: Brass
- Wire Range: 22-16 AWG (0.5-1.5mm<sup>2</sup>)
- Terminal Surface Treatment: Tin Plated
- Terminal Thickness: 0.40mm
- Nema Tab: 0.032" x 0.110" (0.8mm x 2.80mm)
- Double Crimp

### Standard (Metric)

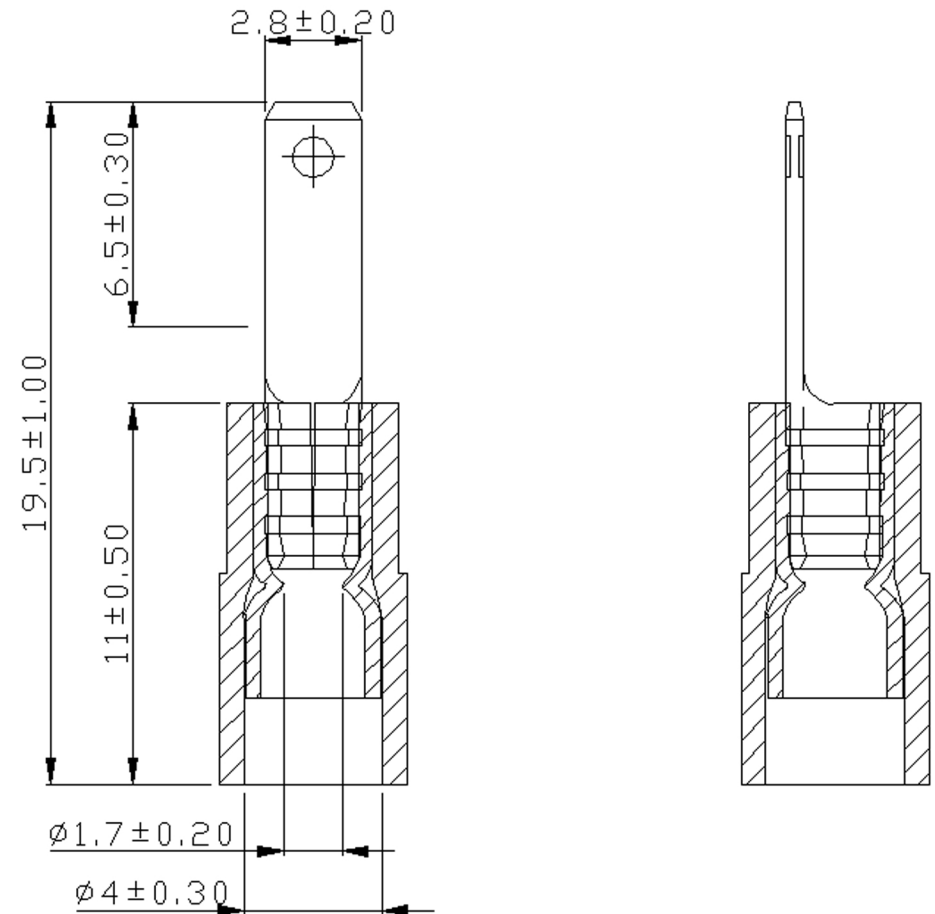
0.77" (19.5mm)  
 0.43" (11mm)  
 0.26" (6.5mm)  
 0.11" (2.8mm)  
 0.07" (1.7mm)  
 0.16" (4mm)

### Tolerances

(Unless Otherwise Specified)

0 > 6mm ± 0.20  
 6 > 18mm ± 0.30  
 18 > 30mm ± 0.40  
 30 > 75mm ± 0.50

<b>CATEGORY</b>	Nylon Insulated Double Crimp Male Disconnectors	<b>SCALE</b>	4/1
<b>PART #</b>	MDNYD1-110(8)	<b>SHEET</b>	1-0
<b>MATERIAL</b>	Tin-Plated Brass	<b>PAGE</b>	10F2



# MIROMAR