

Notes:

- Maximum Electric Current:

AWG	12	10	
AMP	35	50	
- Maximum Electric Rating: 105°C 600 Volts Max
- Insulation Material: Vinyl
- Insulation Color: Yellow
- Terminal Material: Copper
- Wire Range: 12-10 AWG (4-6mm²)
- Terminal Surface Treatment: Tin Plated
- Terminal Thickness: 1.00mm

Standard (Metric)

0.99" (25.2mm)
 0.28" (7mm)
 0.51" (13mm)
 0.33" (8.3mm)
 0.17" (4.3mm)
 0.13" (3.4mm)
 0.25" (6.4mm)

Tolerances

(Unless Otherwise Specified)

CATEGORY

Vinyl Insulated
Locking Spade Terminals

SCALE

4/1

PART #

LSVB5-4

SHEET

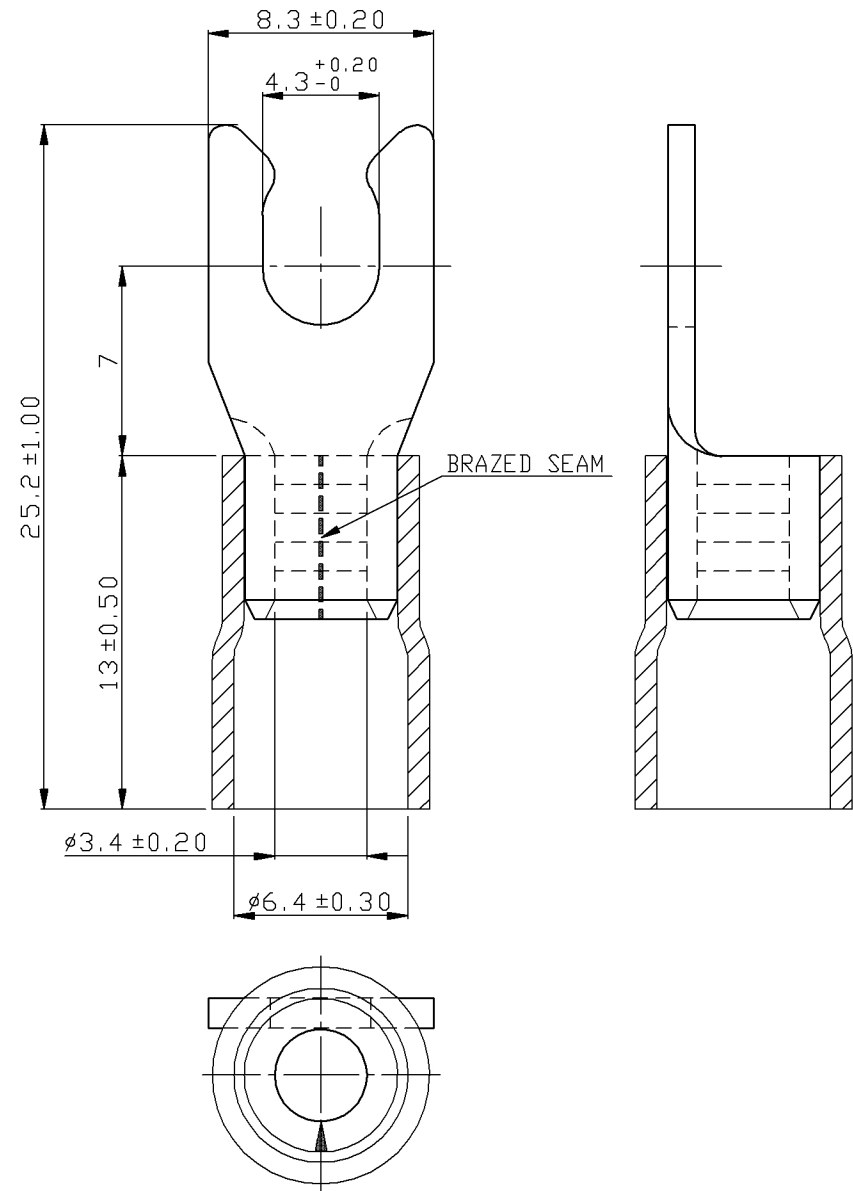
1-3

MATERIAL

Tin-Plated Copper

PAGE

10F2



MIROMAR