

Notes:

- Maximum Electric Current:

AWG	12	10	
AMP	35	50	
- Maximum Electric Rating: 105°C 600 Volts Max
- Insulation Material: Vinyl
- Insulation Color: Yellow
- Terminal Material: Copper
- Wire Range: 12-10 AWG (4-6mm²)
- Terminal Surface Treatment: Tin Plated
- Terminal Thickness: 1.00mm

Standard (Metric)

1.16" (29.5mm)
 0.41" (10.3mm)
 0.51" (13mm)
 0.47" (12mm)
 0.25" (6.4mm)
 0.13" (3.4mm)
 0.25" (6.4mm)

Tolerances

(Unless Otherwise Specified)

CATEGORY

Vinyl Insulated
Hook Terminals

SCALE

4/1

PART #

HVB5-6

SHEET

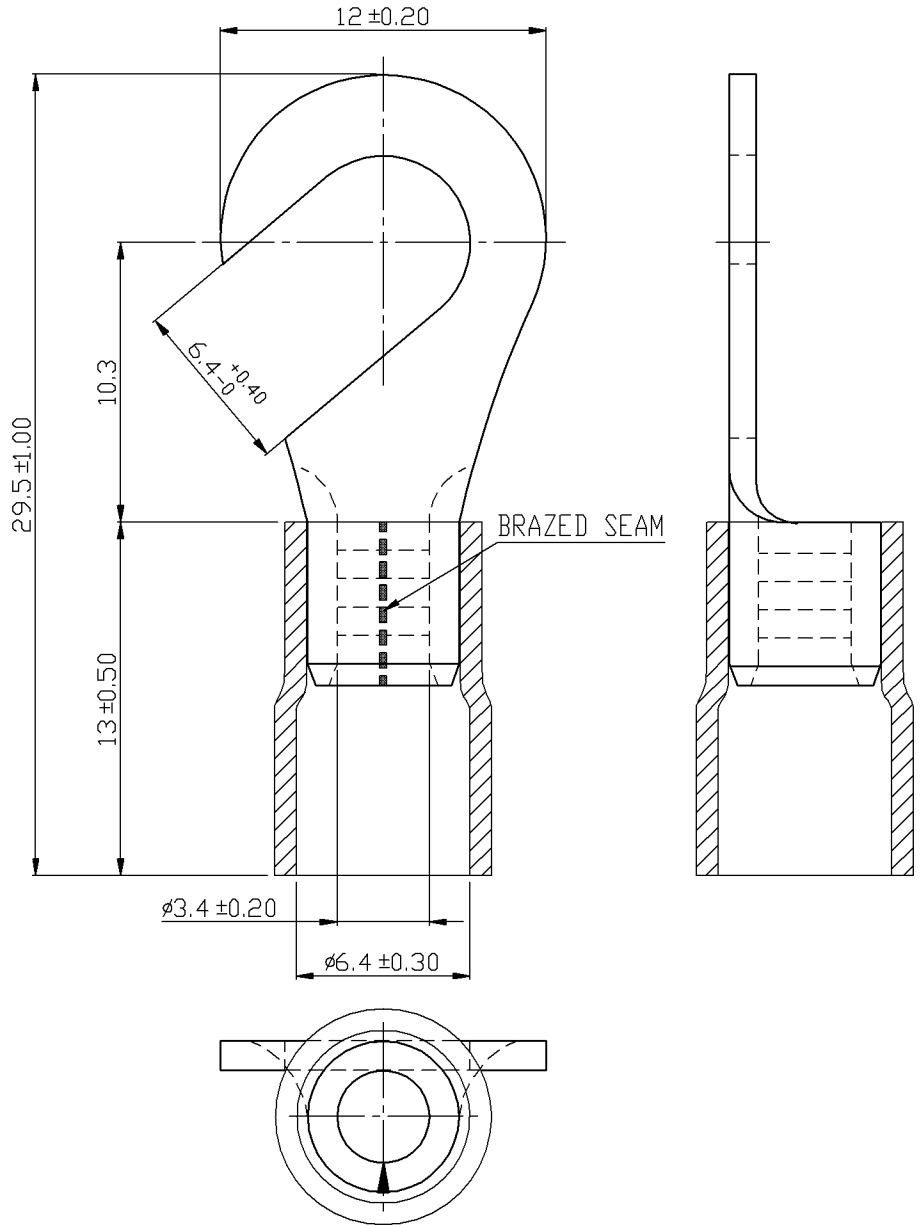
1-3

MATERIAL

Tin-Plated Copper

PAGE

10F2



MIROMAR