

Notes:

- Maximum Electrical Current:

AWG	12	10	
AMP	35	50	
- Maximum Electrical Rating: 105° 600 Volts
- Terminal Material: Copper
- Wire Range: 12-10 AWG (4-6mm²)
- Terminal Surface Treatment: Tin Plated
- Terminal Thickness: 1.00mm
- 1/4 Stud Size

Standard (Metric)

0.89" (22.5mm)
 0.24" (6mm)
 0.41" (10.3mm)
 0.47" (12mm)
 0.13" (3.4mm)
 0.22" (5.6mm)
 0.25" (6.4mm)

Tolerances

(Unless Otherwise Specified)

CATEGORY

Non Insulated
Hook Terminals

SCALE

5/1

PART #

HNBS-6

SHEET

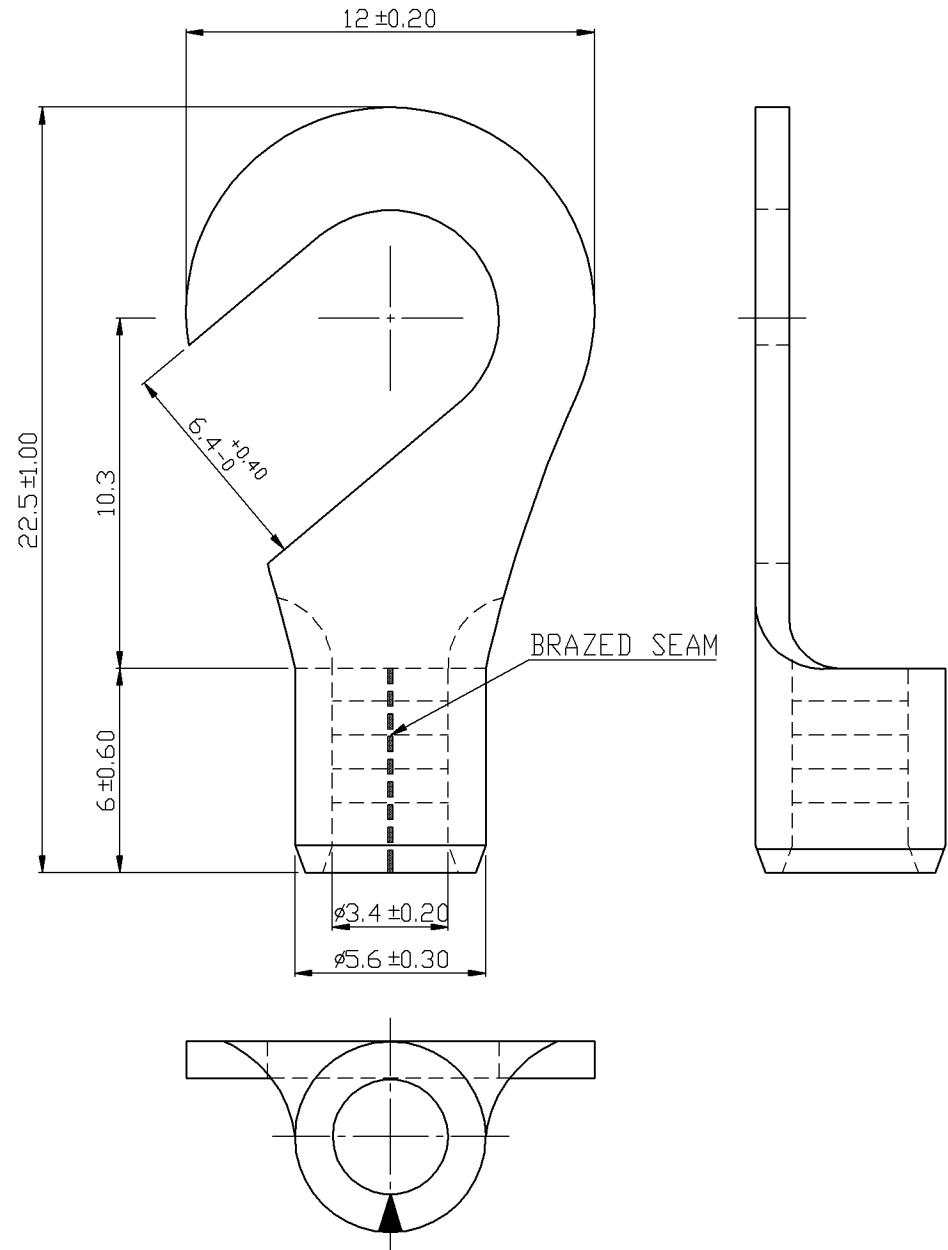
1-2

MATERIAL

Tin Plated Copper

PAGE

10F2



MIROMAR