

## Notes:

- Maximum Electric Current: 

AWG	12	10	
AMP	35	50	
- Maximum Electric Rating: 105°C 600 Volts Max
- Insulation Material: Nylon
- Insulation Color: Yellow
- Terminal Material: Copper
- Wire Range: 12-10 AWG (4-6mm<sup>2</sup>)
- Terminal Surface Treatment: Tin Plated
- Terminal Thickness: 1.00mm

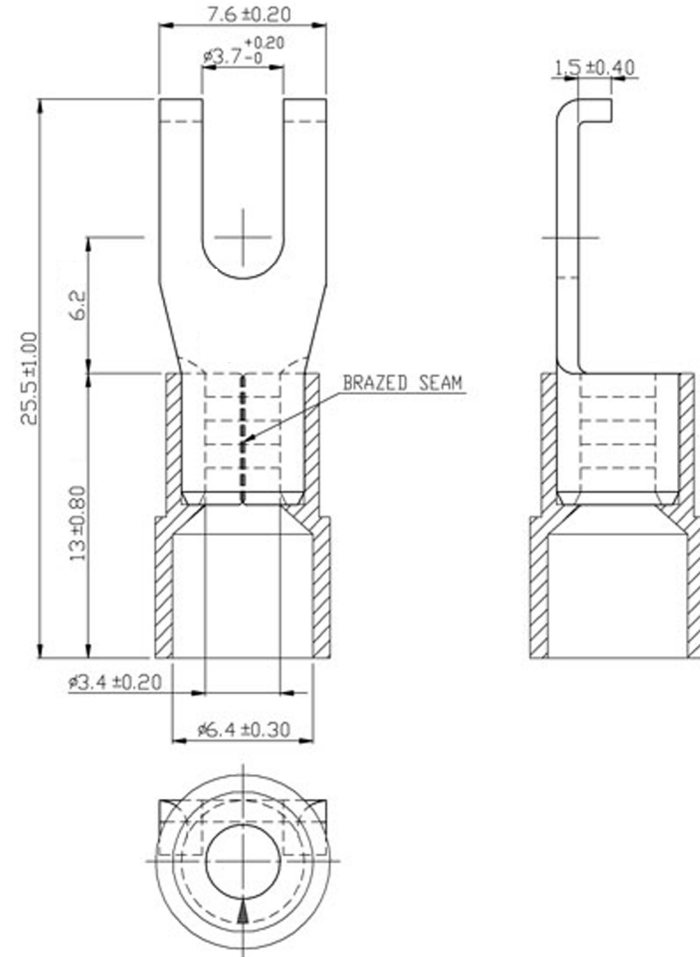
### Standard (Metric)

1.00" (25.5mm)  
 0.24" (6.2mm)  
 0.51" (13mm)  
 0.30" (7.6mm)  
 0.15" (3.7mm)  
 0.13" (3.4mm)  
 0.25" (6.4mm)  
 0.06" (1.5mm)

### Tolerances

(Unless Otherwise Specified)

<b>CATEGORY</b>	Nylon Insulated Flange Spade Terminals	<b>SCALE</b>	4/1
<b>PART #</b>	FSNYBS5-37	<b>SHEET</b>	1-3
<b>MATERIAL</b>	Tin-Plated Copper	<b>PAGE</b>	10F2



# MIROMAR