

Notes:

- Maximum Electric Current:

AWG	22	20	18	16
AMP	3	4	7	10
- Maximum Electric Rating: 105°C 600 Volts Max
- Insulation Material: Nylon
- Insulation Color: Red
- Terminal Material: Brass
- Wire Range: 22-16 AWG (0.5-1.5mm²)
- Terminal Surface Treatment: Tin Plated
- Terminal Thickness: 0.40mm

Standard (Metric)

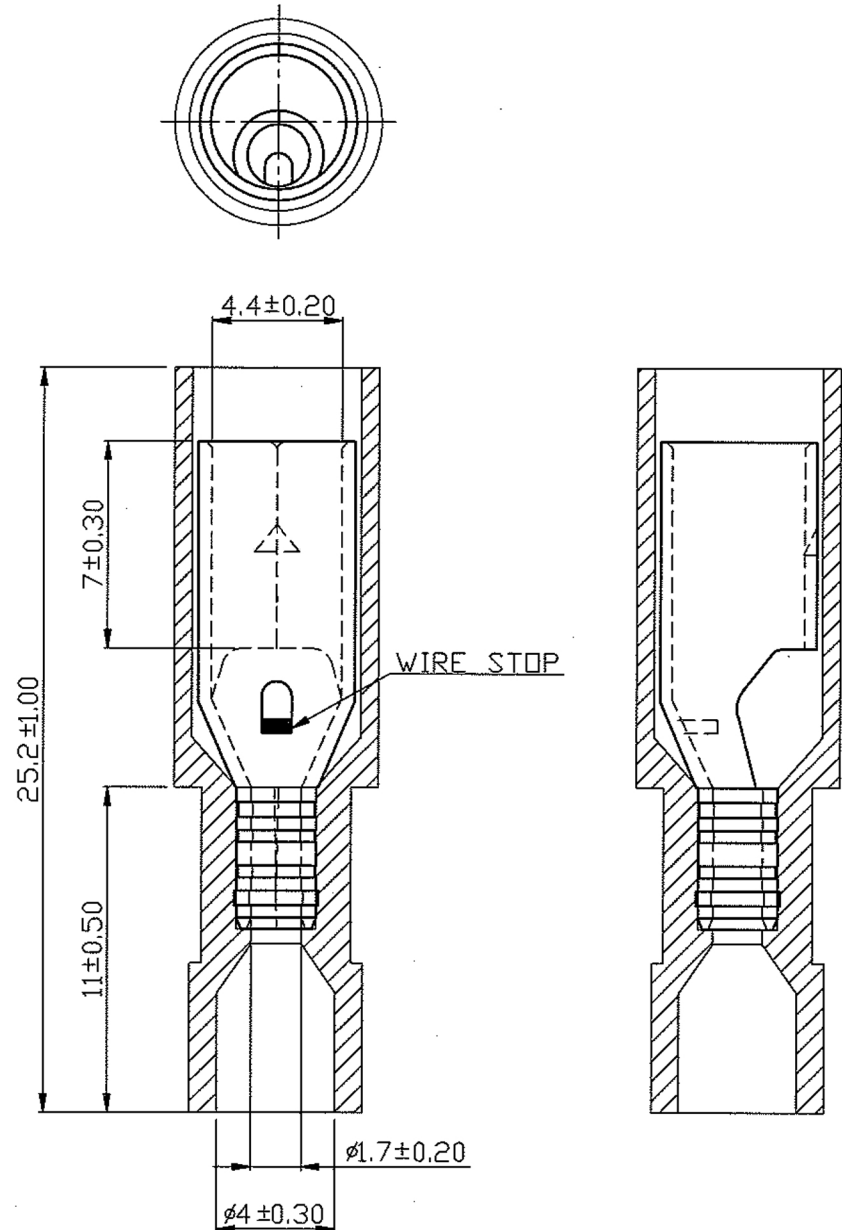
0.99" (25.2mm)
 0.43" (11mm)
 0.28" (7mm)
 0.17" (4.4mm)
 0.07" (1.7mm)
 0.16" (4mm)

Tolerances

(Unless Otherwise Specified)

0 > 6mm ± 0.20
 6 > 18mm ± 0.30
 18 > 30mm ± 0.40
 30 > 75mm ± 0.50

CATEGORY	Nylon Fully Insulated Receptacle Disconnectors	SCALE	4/1
PART #	FRFNY1-180	SHEET	1-1
MATERIAL	Tin-Plated Brass	PAGE	10F2



MIROMAR