

Notes:

- Maximum Electrical Current:

AWG	16	14	
AMP	10	15	
- Maximum Electrical Rating: 105° 300 Volts
- Insulated Material: Nylon
- Insulation Color: Blue
- Terminal Material: Brass
- Wire Range: 16-14 AWG (1.5-2.5mm²)
- NEMA Tab: 0.032 x 0.187 inch (0.8 x 4.75 mm)
- Thickness: 0.40mm
- Terminal Surface Treatment: Tin Plated
- Double Crimp

Standard (Metric)

0.75" (19mm)
 0.47" (12mm)
 0.22" (5.5mm)
 0.24" (6.2mm)
 0.09" (2.2mm)
 0.18" (4.5mm)

Tolerances

(Unless Otherwise Specified)

CATEGORY

Nylon Insulated
 Flag Quick Disconnect
 - Double Crimp

SCALE

4/1

PART

FLDNYDX2-187(8)

SHEET

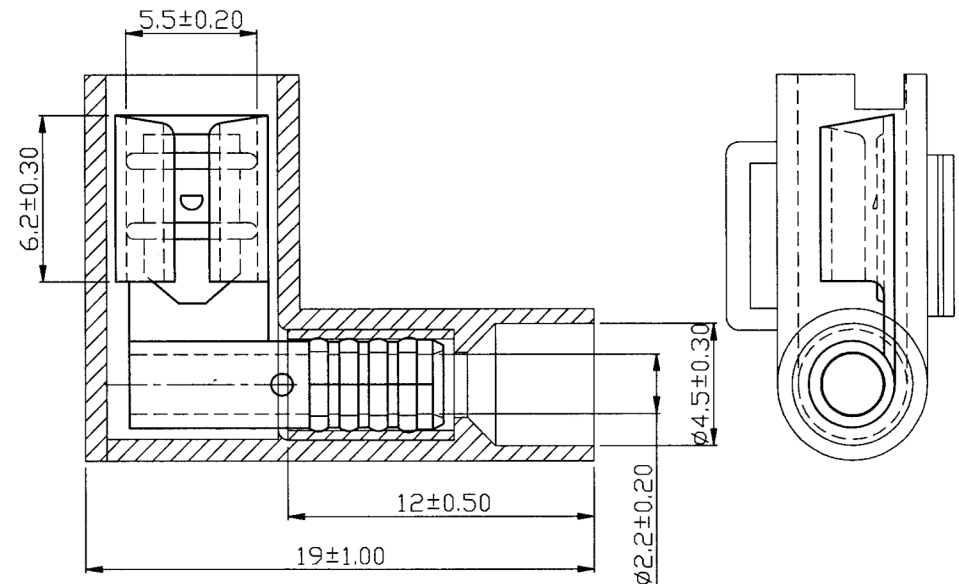
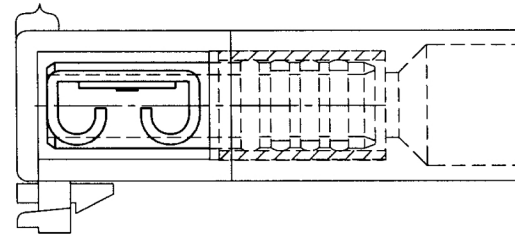
1-0

MATERIAL

Tin Plated Brass

PAGE

10F2



MIROMAR