

## Notes:

- Maximum Electrical Current: 

AWG	22	20	18
AMP	3	4	7
- Maximum Electrical Rating: 105° 300 Volts
- Insulated Material: Nylon
- Insulation Color: Red
- Terminal Material: Brass
- Wire Range: 22-18 AWG (0.5-0.75mm<sup>2</sup>)
- NEMA Tab: 0.032 x 0.187 inch (0.8 x 4.75 mm)
- Thickness: 0.40mm
- Terminal Surface Treatment: Tin Plated

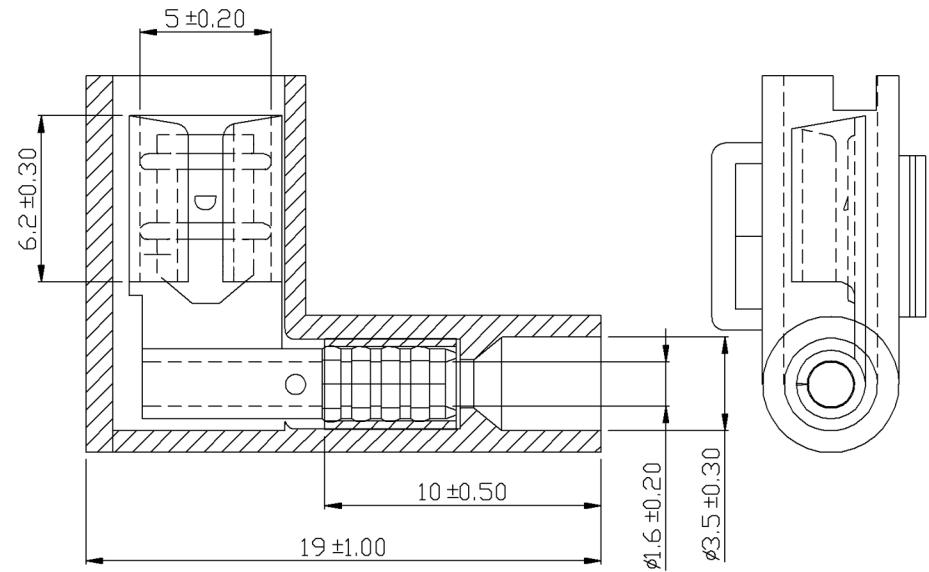
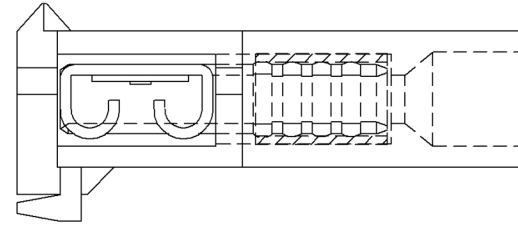
### Standard (Metric)

0.75" (19mm)  
 0.39" (10mm)  
 0.20" (5mm)  
 0.24" (6.2mm)  
 0.06" (1.6mm)  
 0.14" (3.5mm)

### Tolerances

(Unless Otherwise Specified)

<b>CATEGORY</b>	Nylon Insulated Flag Quick Disconnect - Double Crimp	<b>SCALE</b>	4/1
<b>PART #</b>	FLDNYDX1-187(8)	<b>SHEET</b>	1-2
<b>MATERIAL</b>	Tin Plated Brass	<b>PAGE</b>	10F2



# MIROMAR