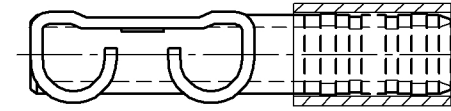


Notes:

- Maximum Electric Current:

AWG	22	20	18
AMP	3	4	7
- Terminal Material: Brass
- Wire Range: 22-18 AWG (0.5-0.75mm²)
- Terminal Surface Treatment: Tin Plated
- Nema Tab: 0.032" x 0.250" (0.8mm x 6.35mm)
- Thickness: 0.40mm
- Double Crimp



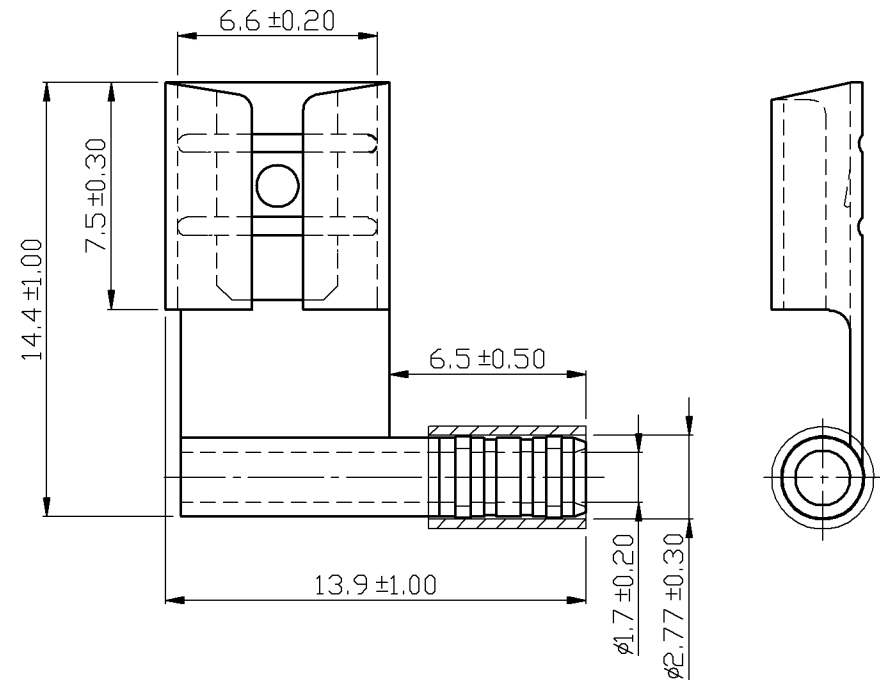
Standard (Metric)

0.57" (14.4mm)
 0.30" (7.5mm)
 0.26" (6.6mm)
 0.26" (6.5mm)
 0.55" (13.9mm)
 0.07" (1.7mm)
 0.11" (2.77mm)

Tolerances

(Unless Otherwise Specified)

0 > 6mm ± 0.20
 6 > 18mm ± 0.30
 18 > 30mm ± 0.40
 30 > 75mm ± 0.50



CATEGORY

Non Insulated 90°
Quick Disconnects

SCALE

4/1

PART #

FLDNDX1-250

SHEET

1-0

MATERIAL

Tin-Plated Brass

PAGE

10F2



MIROMAR