

Notes:

- Maximum Electric Current:

AWG	22	20	18
AMP	3	4	7
- Terminal Material: Brass
- Wire Range: 22-18 AWG (0.5-0.75mm²)
- Terminal Surface Treatment: Tin Plated
- Nema Tab: 0.020" x 0.187" (0.5mm x 4.75mm)
- Thickness: 0.40mm
- Double Crimp

Standard (Metric)

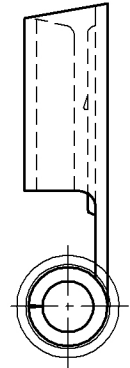
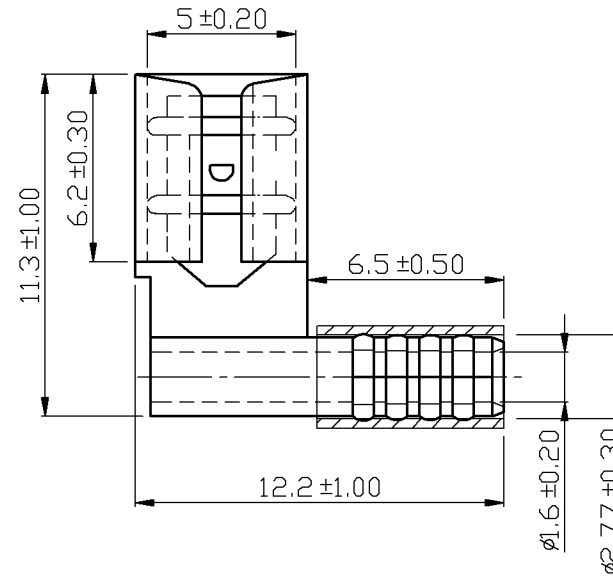
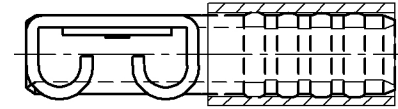
0.44" (11.3mm)
 0.24" (6.2mm)
 0.20" (5mm)
 0.26" (6.5mm)
 0.48" (12.2mm)
 0.06" (1.6mm)
 0.11" (2.77mm)

Tolerances

(Unless Otherwise Specified)

0 > 6mm ± 0.20
 6 > 18mm ± 0.30
 18 > 30mm ± 0.40
 30 > 75mm ± 0.50

CATEGORY	Non Insulated 90° Quick Disconnects	SCALE	4/1
PART #	FLDNDX1-187(5)	SHEET	1-0
MATERIAL	Tin-Plated Brass	PAGE	10F2



MIROMAR