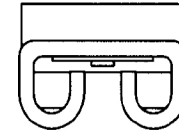


Notes:

- Maximum Electric Current:

AWG	16	14		
AMP	10	15		
- Terminal Material: Brass
- Wire Range: 16-14 AWG (1.5-2.5mm²)
- Terminal Surface Treatment: Tin Plated
- Nema Tab: 0.020" x 0.187" (0.5mm x 4.75mm)
- Thickness: 0.40mm



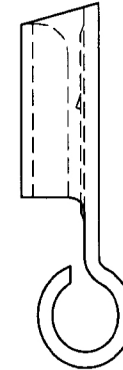
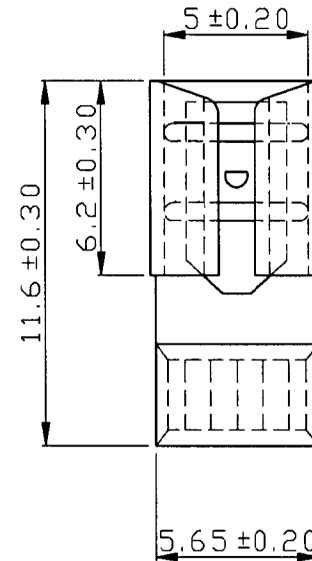
Standard (Metric)

- 0.46" (11.6mm)
- 0.24" (6.2mm)
- 0.20" (5mm)
- 0.22" (5.65mm)

Tolerances

(Unless Otherwise Specified)

- 0 > 6mm ± 0.20
- 6 > 18mm ± 0.30
- 18 > 30mm ± 0.40
- 30 > 75mm ± 0.50



CATEGORY	Non Insulated Flag Quick Disconnects	SCALE	4/1
PART #	FLDNB2-187(5)	SHEET	1-0
MATERIAL	Tin-Plated Brass	PAGE	10F2

