

**Notes:**

- Maximum Electric Current: 

AWG	12	10	
AMP	35	50	
- Maximum Electric Rating: 105°C 600 Volts Max
- Insulation Material: Vinyl
- Insulation Color: Yellow
- Terminal Material: Copper
- Wire Range: 12-10 AWG (4-6mm<sup>2</sup>)
- Terminal Surface Treatment: Tin Plated
- Terminal Thickness: 1.00mm

**Standard (Metric)**

- 1.11" (28.1mm)
- 0.56" (14.1mm)
- 0.16" (4mm)
- 0.13" (3.4mm)
- 0.25" (6.3mm)

**Tolerances**

(Unless Otherwise Specified)

**CATEGORY**

Easy Entry Insulated  
Flat Blade Terminal

**SCALE**

4/1

**PART #**

DBVES5-14

**SHEET**

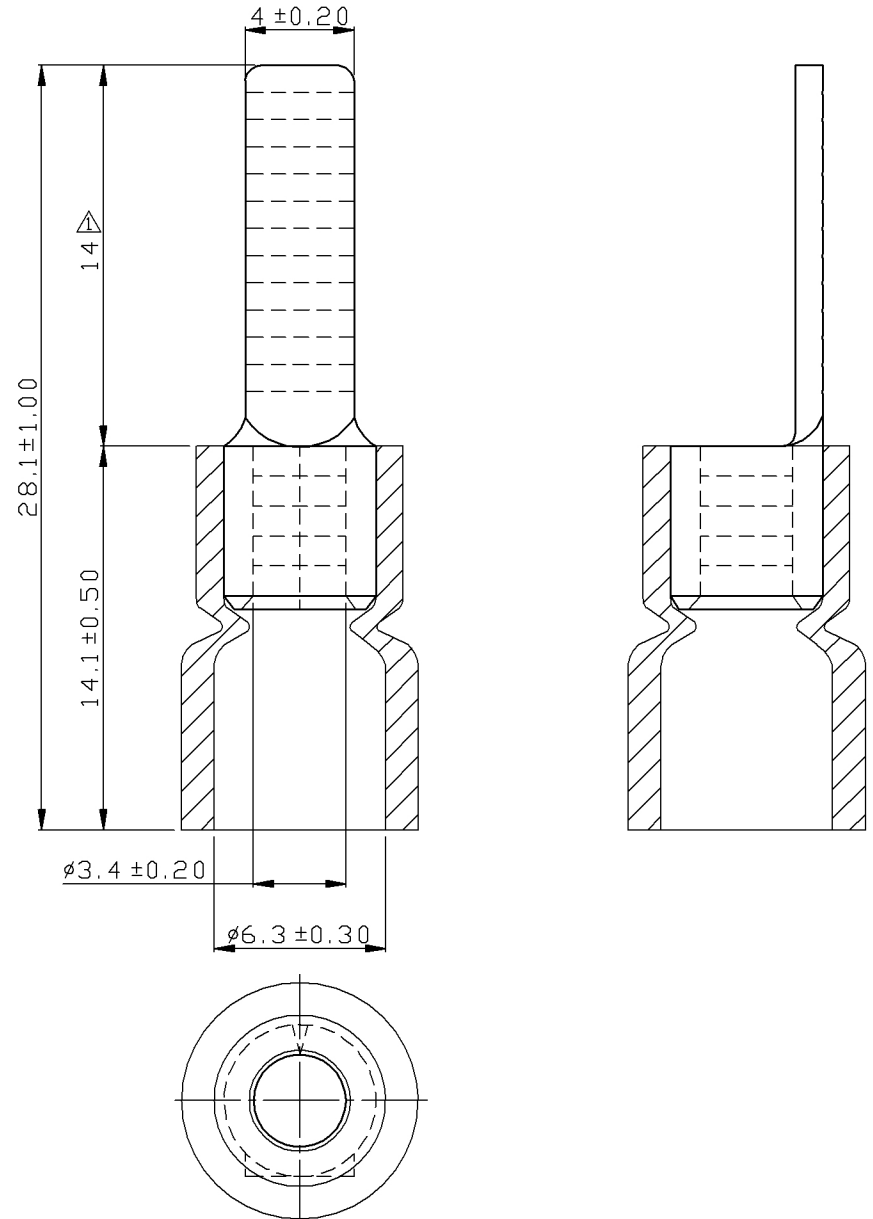
1-2

**MATERIAL**

Tin-Plated Copper

**PAGE**

10F2



**MIROMAR**