

Notes:

- Maximum Electric Current:

| | | | |
|-----|----|----|--|
| AWG | 12 | 10 | |
| AMP | 35 | 50 | |
- Maximum Electric Rating: 105°C 600 Volts Max
- Insulation Material: Vinyl
- Insulation Color: Yellow
- Terminal Material: Copper
- Wire Range: 12-10 AWG (4-6mm²)
- Terminal Surface Treatment: Tin Plated
- Terminal Thickness: 1.00mm

Standard (Metric)

- 1.26 (32.1mm)
- 0.56 (14.1mm)
- 0.18 (4.5mm)
- 0.13 (3.4mm)
- 0.25 (6.3mm)

Tolerances

(Unless Otherwise Specified)

CATEGORY

Easy Entry Insulated
Flat Blade Terminal

SCALE

3/1

PART #

DBVE5-18

SHEET

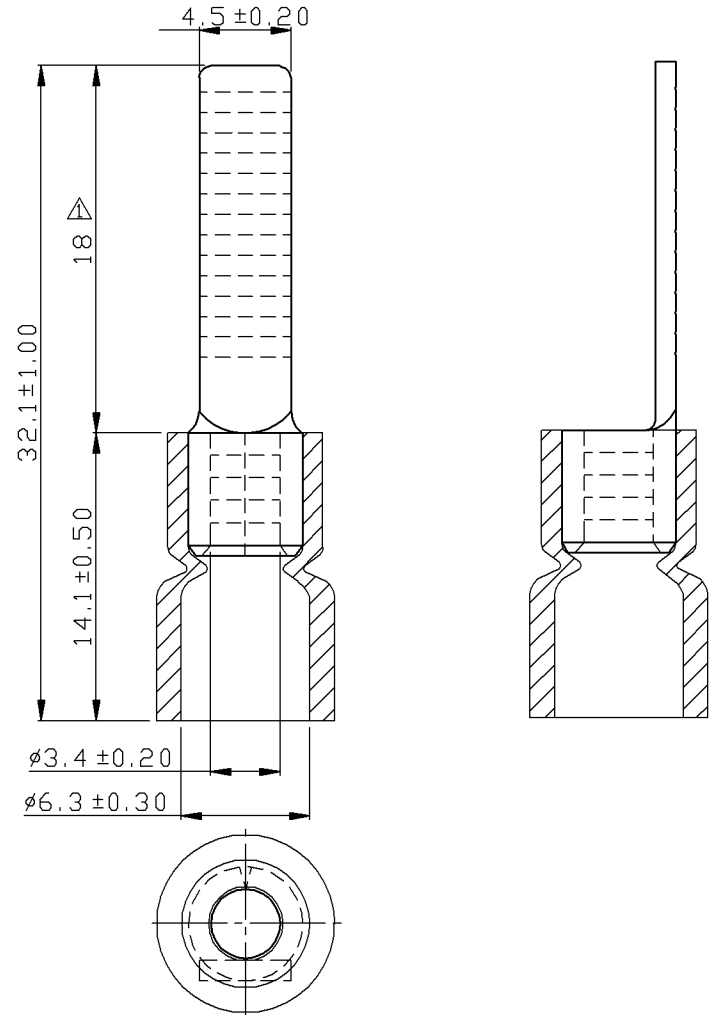
1-2

MATERIAL

Tin-Plated Copper

PAGE

10F2



MIROMAR