

### Notes:

- Maximum Electric Current: 

AWG	16	14	
AMP	18	35	
- Maximum Electric Rating: 105°C 600 Volts Max
- Insulation Material: Nylon
- Insulation Color: Blue
- Terminal Material: Copper
- Wire Range: 16-14 AWG (1.5-2.5mm<sup>2</sup>)
- Double Crimp
- Terminal Surface Treatment: Tin Plated
- Terminal Thickness: 0.80mm

### Standard (Metric)

0.94" (24mm)  
 0.43" (11mm)  
 0.51" (13mm)  
 0.12" (3mm)  
 0.09" (2.3mm)  
 0.20" (5.2mm)

### Tolerances

(Unless Otherwise Specified)

#### CATEGORY

Nylon Insulated Double Crimp  
Blade Terminals

#### SCALE

4/1

#### PART #

DBNYDL2-13

#### SHEET

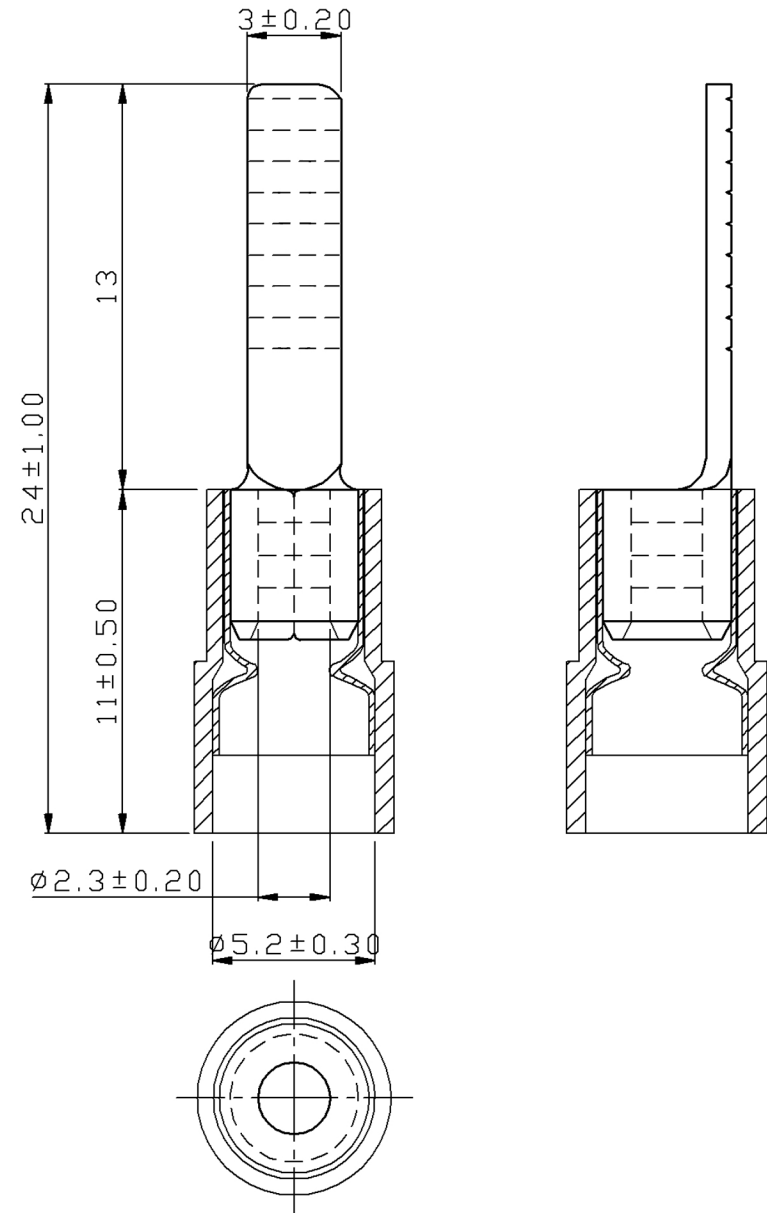
1-2

#### MATERIAL

Tin-Plated Copper

#### PAGE

10F2



# MIROMAR