

Notes:

1. Maximum Electric Current:

AWG	12	10	
AMP	35	50	
2. Maximum Electric Rating: 105°C 600 Volts Max
3. Insulation Material: Nylon
4. Insulation Color: Yellow
5. Terminal Material: Copper
6. Wire Range: 12-10 AWG (4-6mm²)
7. Double Crimp
8. Terminal Surface Treatment: Tin Plated
9. Terminal Thickness: 1.00mm

Standard (Metric)

- 1.22" (31mm)
- 0.51" (13mm)
- 0.71" (18mm)
- 0.18" (4.5mm)
- 0.13" (3.4mm)
- 0.28" (7mm)

Tolerances

(Unless Otherwise Specified)

CATEGORY

Nylon Insulated Double Crimp
Blade Terminals

SCALE

3/1

PART

DBNYD5-18

SHEET

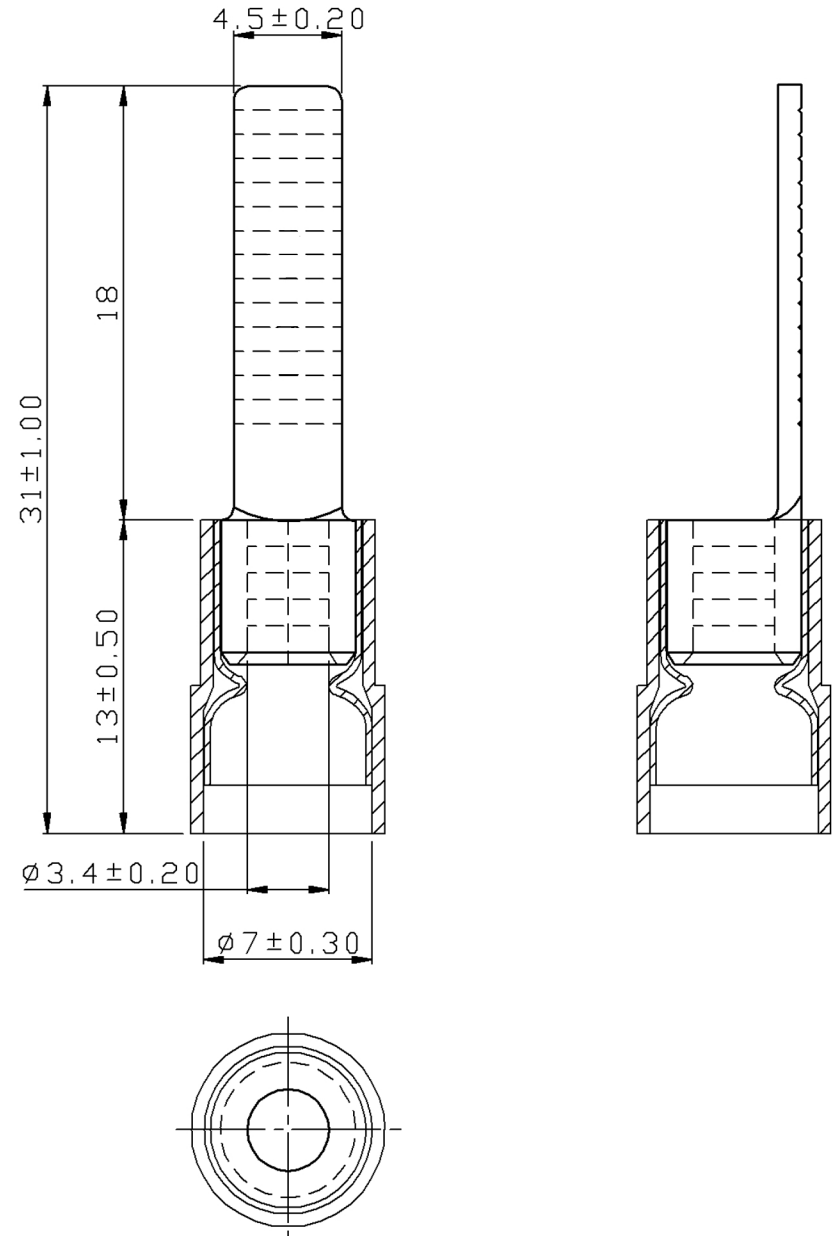
1-2

MATERIAL

Tin-Plated Copper

PAGE

10F2



MIROMAR