

### Notes:

1. Maximum Electric Current: 

AWG	16	14		
AMP	18	30		
2. Maximum Electric Rating: 105°C 600 Volts Max
3. Insulation Material: Nylon
4. Insulation Color: Blue
5. Terminal Material: Copper
6. Wire Range: 16-14 AWG (1.5-2.5mm<sup>2</sup>)
7. Double Crimp
8. Terminal Surface Treatment: Tin Plated
9. Terminal Thickness: 0.80mm

### Standard (Metric)

0.94" (23.8mm)  
 0.43" (11mm)  
 0.51" (13mm)  
 0.09" (2.4mm)  
 0.09" (2.3mm)  
 0.20" (5.2mm)

### Tolerances

(Unless Otherwise Specified)

#### CATEGORY

Nylon Insulated Double Crimp  
Blade Terminals

#### SCALE

4/1

#### PART #

DBNYD2-13

#### SHEET

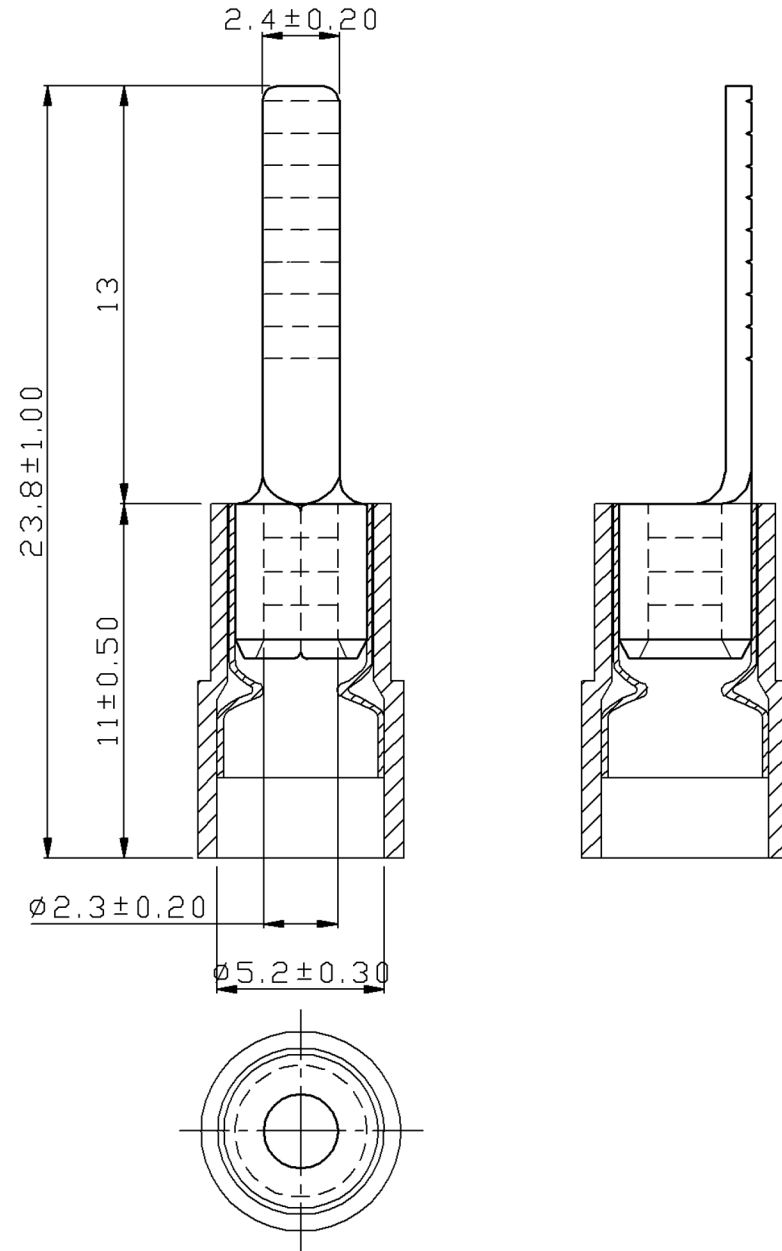
1-2

#### MATERIAL

Tin-Plated Copper

#### PAGE

10F2



# MIROMAR